



Corporación América Airports S.A. Reports August 2023 Passenger Traffic

Total passenger traffic up 18.7% YoY reaching 99% of pre-pandemic levels
 Armenia, Ecuador, Italy and Brazil above August 2019 levels
 Aircraft movements at 99% of August 2019

Luxembourg, September 15, 2023— Corporación América Airports S.A. (NYSE: CAAP), (“CAAP” or the “Company”), one of the leading private airport operators in the world, reported today a 18.7% year-on-year (YoY) increase in passenger traffic in August 2023, reaching 98.7% of August 2019 levels.

Passenger Traffic, Cargo Volume and Aircraft Movements Highlights (2023 vs. 2022)

Statistics	Aug'23	Aug'22	% Var.	YTD'23	YTD'22	% Var.
Domestic Passengers (thousands)	4,108	3,451	19.0%	30,012	24,239	23.8%
International Passengers (thousands)	2,787	2,233	24.8%	18,661	13,167	41.7%
Transit Passengers (thousands)	596	629	-5.3%	4,713	3,765	25.2%
Total Passengers (thousands)	7,491	6,313	18.7%	53,385	41,172	29.7%
Cargo Volume (thousand tons)	31.0	26.8	15.4%	237.7	221.7	7.2%
Total Aircraft Movements (thousands)	77.0	69.3	11.0%	568.0	472.6	20.2%

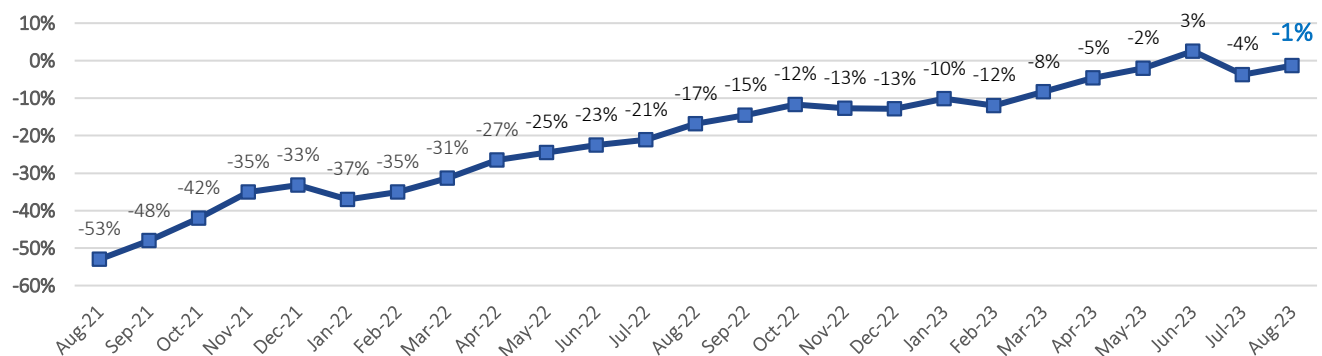
Passenger Traffic, Cargo Volume and Aircraft Movements Highlights (2023 vs. 2019)

Statistics	Aug'23	Aug'19	% Var.	YTD'23	YTD'19 ⁽¹⁾⁽²⁾	% Var.
Domestic Passengers (thousands)	4,108	4,265	-3.7%	30,012	31,484	-4.7%
International Passengers (thousands)	2,787	2,683	3.9%	18,661	19,100	-2.3%
Transit Passengers (thousands)	596	644	-7.5%	4,713	5,546	-15.0%
Total Passengers (thousands)	7,491	7,592	-1.3%	53,385	56,130	-4.9%
Cargo Volume (thousand tons)	31.0	32.4	-4.5%	237.7	278.3	-14.6%
Total Aircraft Movements (thousands)	77.0	77.1	-0.1%	568.0	574.3	-1.1%

(1) Note that preliminary passenger traffic figures for 2019, as well as January 2020 for Ezeiza Airport, in Argentina, were adjusted to include additional inbound passengers not accounted for in the initial count, for an average of approximately 5% of total passenger traffic at Ezeiza Airport and 1% of total traffic at CAAP, during that period. Importantly, inbound traffic does not affect revenues, as tariffs are applicable on departure passengers.

(2) Cargo volumes in Uruguay were rectified from January 2019 to June 2020, to reflect all cargo passing through the cargo terminal, instead of air cargo only.

2-Year Passenger Traffic Monthly Performance (vs. 2019)



Passenger Traffic Overview

Total passenger traffic grew 18.7% compared to the same month of 2022, supported by the ongoing recovery in travel demand after the Covid-19 pandemic and the gradual resumption of routes and frequencies across all countries of operations. Overall passenger traffic reached 98.7% of August 2019 levels, up from 96.3% posted in July, with international passenger traffic surpassing pre-pandemic levels of August 2019 by 3.9%. Domestic traffic stood at 96.3% of August 2019, up from 93.6% in July.

In **Argentina**, total passenger traffic continued to recover in August, increasing 23.8% year-over-year (YoY) and reaching 98.4% of pre-pandemic volumes, a slight improvement from 98.1% in July. Domestic traffic had declined compared to May and June when it benefited from a government program aimed at boosting domestic tourism. However, domestic traffic increased on an absolute basis month-over-month and was 2.9% higher than August 2019 levels. International passenger traffic also continued to recover, reaching 87.0% of pre-pandemic levels, a slight decrease from the 88.3% recorded in July.

In **Italy**, passenger traffic benefited from the summer season and grew by 16.8% compared to the same month in 2022 and surpassed pre-pandemic levels for the second consecutive month, increasing by 4.1% compared to August 2019. International passenger traffic, which accounted for 80% of the total traffic, exceeded August 2019 levels by 1.6%, while domestic passenger traffic surpassed pre-pandemic levels by 16.4%. Although some pre-pandemic destinations still need to resume at Pisa airport, Florence airport has already exceeded 2019 levels and was 19.8% above August 2019 traffic volumes.

In **Brazil**, total passenger traffic increased by 3.8% YoY and surpassed pre-pandemic levels for the first time, rising by 1.4% compared to August 2019. Domestic traffic, which accounted for two-thirds of the total traffic, exceeded pre-pandemic levels by 7.8%, while transit passengers improved to 88.9% of August 2019 levels, up from 77.6% in July.

In **Uruguay**, total passenger traffic, which is largely international, continued to recover and increased 35.1% YoY, reaching 91.3% of August 2019 levels, a slight decline from 94.6% recorded in July.

In **Ecuador**, passenger traffic increased 5.2% YoY and surpassed pre-pandemic volumes by 6.5%. Both domestic and international passenger traffic exceeded pre-pandemic levels by 12.0% and 2.0%, respectively.

In **Armenia**, passenger traffic continued its solid recovery trend, increasing by 41.9% YoY and surpassing the pre-pandemic levels of August 2019 by 62.0%. This is consistent with the 61.5% growth recorded in July but a decline from the 82.4% growth observed in June. The drop in the comparison against the same month of 2019, as compared to June, is explained by the fact that July and August are traditionally strong months in terms of passenger traffic, and the Armenia airport is operating at its maximum capacity due to the significant growth it has experienced. This makes the comparison between August 2023 and August 2019 appear less favorable than the comparison between June 2023 and June 2019. In August 2019, the volume increased due to the high seasonality of the month, whereas in August 2023, although traffic also increased due to high seasonality, the growth was limited by the current capacity of the airport.

Cargo Volume and Aircraft Movements

Cargo volume increased 15.4% YoY and improved to 95.5% of August 2019 levels, or 97.1% when adjusting for the discontinuation of operations in Peru. Cargo volumes in Armenia and Uruguay were above pre-pandemic levels, whereas Italy stood at 90.8%, Ecuador at 99.2%, Argentina at 92.6% and Brazil at 86.1%. Almost 70% of cargo volume originated in Argentina, Ecuador and Uruguay.

Aircraft movements increased 11.0% YoY to 99.9% of August 2019 levels, or exceeded pre-pandemic levels by 3.7% when adjusting for the discontinuation of operations in Peru. All the countries of operations, except Ecuador, exceeded August 2019 pre-pandemic levels.

Summary Passenger Traffic, Cargo Volume and Aircraft Movements (2023 vs. 2022)

	Aug'23	Aug'22	% Var.	YTD'23	YTD'22	% Var.
Passenger Traffic (thousands)						
Argentina ⁽¹⁾	3,815	3,080	23.8%	28,325	20,889	35.6%
Italy	939	804	16.8%	5,493	4,410	24.5%
Brazil	1,487	1,433	3.8%	11,392	10,024	13.6%
Uruguay	158	117	35.1%	1,253	880	42.4%
Ecuador	445	423	5.2%	3,276	2,740	19.6%
Armenia	647	456	41.9%	3,647	2,229	63.6%
TOTAL	7,491	6,313	18.7%	53,385	41,172	29.7%
Cargo Volume (tons)						
Argentina	15,973	15,147	5.4%	122,487	119,660	2.4%
Italy	751	977	-23.1%	8,624	9,792	-11.9%
Brazil	5,878	3,559	65.1%	42,987	35,579	20.8%
Uruguay ⁽²⁾	2,519	2,568	-1.9%	20,930	21,950	-4.6%
Ecuador	2,909	2,514	15.7%	21,740	22,695	-4.2%
Armenia	2,944	2,072	42.1%	20,948	11,995	74.6%
TOTAL	30,974	26,837	15.4%	237,716	221,672	7.2%
Aircraft Movements						
Argentina	41,025	35,748	14.8%	304,943	243,240	25.4%
Italy	8,466	7,568	11.9%	52,487	46,192	13.6%
Brazil	13,630	12,754	6.9%	106,544	93,107	14.4%
Uruguay	2,264	1,959	15.6%	20,995	17,525	19.8%
Ecuador	6,852	7,172	-4.5%	53,107	51,121	3.9%
Armenia	4,721	4,123	14.5%	29,948	21,416	39.8%
TOTAL	76,958	69,324	11.0%	568,024	472,601	20.2%

(1) See Footnote 1 in previous table. (2) See Footnote 2 in previous table.

Summary Passenger Traffic, Cargo Volume and Aircraft Movements (2023 vs. 2019)

	Aug'23	Aug'19	% Var.	YTD'23	YTD'19	% Var.
Passenger Traffic (thousands)						
Argentina ⁽¹⁾	3,815	3,875	-1.6%	28,325	29,151	-2.8%
Italy	939	902	4.1%	5,493	5,569	-1.4%
Brazil	1,487	1,467	1.4%	11,392	12,464	-8.6%
Uruguay	158	173	-8.7%	1,253	1,490	-15.9%
Ecuador	445	418	6.5%	3,276	3,053	7.3%
Armenia	647	400	62.0%	3,647	2,092	74.3%
Peru		358	-	-	2,311	-
TOTAL	7,491	7,592	-1.3%	53,385	56,130	-4.9%
(1) See Footnote 1 in previous table. (2) See Footnote 2 in previous table.						
Cargo Volume (tons)						
Argentina	15,973	17,247	-7.4%	122,487	146,445	-16.4%
Italy	751	827	-9.2%	8,624	8,494	1.5%
Brazil	5,878	6,823	-13.9%	42,987	62,505	-31.2%
Uruguay ⁽²⁾	2,519	2,280	10.5%	20,930	18,816	11.2%
Ecuador	2,909	2,933	-0.8%	21,740	27,044	-19.6%
Armenia	2,944	1,773	66.0%	20,948	11,606	80.5%
Peru	-	540	-	-	3,340	-
TOTAL	30,974	32,423	-4.5%	237,716	278,250	-14.6%
Aircraft Movements						
Argentina	41,025	39,702	3.3%	304,943	301,737	1.1%
Italy	8,466	8,379	1.0%	52,487	53,583	-2.0%
Brazil	13,630	13,370	1.9%	106,544	106,054	0.5%
Uruguay	2,264	2,084	8.6%	20,995	20,071	4.6%
Ecuador	6,852	7,423	-7.7%	53,107	55,102	-3.6%
Armenia	4,721	3,221	46.6%	29,948	17,636	69.8%
Peru	-	2,894	-	-	20,165	-
TOTAL	76,958	77,073	-0.1%	568,024	574,348	-1.1%

About Corporación América Airports

Corporación América Airports acquires, develops and operates airport concessions. Currently, the Company operates 53 airports in 6 countries across Latin America and Europe (Argentina, Brazil, Uruguay, Ecuador, Armenia and Italy). In 2022, Corporación América Airports served 65.6 million passengers, 83.7% above the 35.7 million passengers served in 2021 and 22.1% below the 84.2 million served in 2019. The Company is listed on the New York Stock Exchange where it trades under the ticker "CAAP". For more information, visit <http://investors.corporacionamericaairports.com>.

Investor Relations Contact

Patricio Iñaki Esnaola

Email: patricio.esnaola@caairports.com

Phone: +5411 4899-6716

Operating Statistics by Airport: Traffic, Cargo and Aircraft Movements (2023 vs. 2022)

	Domestic Passenger Traffic (in thousands)			International Passenger Traffic (in thousands)			Transit Passengers (in thousands)			Total Passenger Traffic (in thousands)			Cargo Volume (in tons) ⁽³⁾			Aircraft Movements		
	Aug-23	Aug -22	% Var.	Aug-23	Aug -22	% Var.	Aug-23	Aug -22	% Var.	Aug-23	Aug -22	% Var.	Aug-23	Aug -22	% Var.	Aug-23	Aug -22	% Var.
Argentina																		
Aeroparque	971	878	10.6%	273	210	30.3%	91	74	23.7%	1,335	1,161	15.0%	100	104	-4.2%	10,834	9,601	12.8%
Bariloche	319	229	39.2%	9	7	32.9%	0	0	-	329	236	38.9%	-	-	-	2,221	1,724	28.8%
Catamarca	7	6	5.6%	-	-	-	1	0	-	7	7	11.1%	4	7	-35.3%	286	296	-3.4%
C. Rivadavia	48	44	8.4%	-	-	-	1	0	-	48	44	10.1%	47	39	22.1%	571	530	7.7%
Córdoba	214	155	38.1%	38	29	29.6%	5	6	-29.7%	256	191	34.5%	82	131	-37.4%	2,382	2,007	18.7%
El Palomar	-	0	-	-	-	-	-	-	-	-	0	-	-	-	-	410	494	-17.0%
Esquel	7	7	6.2%	-	-	-	-	0	-	7	7	6.1%	-	-	-	73	68	7.4%
Ezeiza ⁽⁴⁾	305	179	70.8%	603	498	21.1%	27	23	15.4%	935	700	33.6%	15,003	14,649	2.4%	6,291	4,715	33.4%
Formosa	9	8	6.4%	-	0	-	-	-	-	9	8	6.1%	-	7	-	163	104	56.7%
General Pico	-	0	-	-	-	-	-	0	-	-	0	-	-	-	-	106	48	120.8%
Iguazú	127	110	15.3%	-	0	-	0	0	-	127	111	14.9%	-	-	-	919	866	6.1%
Jujuy	47	44	7.3%	-	0	-	1	1	-	48	45	7.0%	-	5	-	424	471	-10.0%
La Rioja	7	6	15.2%	-	-	-	1	0	-	8	6	18.3%	10	4	129.5%	252	166	51.8%
Malargüe	-	0	-	-	0	-	-	0	-	-	0	-	-	-	-	350	204	71.6%
Mar del Plata	19	17	12.8%	-	-	-	2	1	30.1%	21	19	14.1%	0	6	-	565	449	25.8%
Mendoza	152	118	28.2%	44	27	59.4%	4	3	18.4%	199	149	33.7%	39	33	18.4%	1,803	1,481	21.7%
Paraná	4	3	47.8%	-	-	-	-	-	-	4	3	47.8%	-	-	-	395	355	11.3%
Posadas	33	-	-	-	-	-	-	-	-	33	-	-	7	-	-	363	-	-
Pto Madryn	17	12	42.0%	-	-	-	-	0	-	17	12	39.7%	2	15	-89.3%	129	102	26.5%
Reconquista	1	0	-	-	-	-	-	0	-	1	0	-	-	-	-	332	344	-3.5%
Resistencia	21	26	-17.6%	-	0	-	0	0	-	22	26	-17.3%	11	12	-8.0%	377	356	5.9%
Río Cuarto	2	1	65.8%	-	-	-	-	0	-	2	2	29.7%	1	-	-	70	69	1.4%

	Domestic Passenger Traffic (in thousands)			International Passenger Traffic (in thousands)			Transit Passengers (in thousands)			Total Passenger Traffic (in thousands)			Cargo Volume (in tons) ^(a)			Aircraft Movements		
	Aug-23	Aug -22	% Var.	Aug-23	Aug -22	% Var.	Aug-23	Aug -22	% Var.	Aug-23	Aug -22	% Var.	Aug-23	Aug -22	% Var.	Aug-23	Aug -22	% Var.
Río Gallegos	20	18	9.2%	-	-	-	1	1	-	21	19	8.8%	27	22	20.6%	342	345	-0.9%
Río Grande	13	10	30.8%	-	-	-	0	0	-	13	10	31.5%	577	17	3205.1%	257	269	-4.5%
Salta	124	105	18.1%	1	1	-	0	2	-	125	108	16.0%	24	31	-22.4%	1,371	1,085	26.4%
San Fernando	-	2	-	-	1	-	-	-	-	-	3	-	-	-	-	5,593	5,114	9.4%
San Juan	20	17	12.2%	-	0	-	-	0	-	20	18	11.9%	-	-	-	224	268	-16.4%
San Luis	6	7	-11.4%	-	-	-	-	0	-	6	7	-11.5%	-	20	-	246	576	-57.3%
San Rafael	4	4	-1.3%	-	-	-	-	-	-	4	4	-1.3%	-	-	-	746	740	0.8%
Santa Rosa	4	3	23.3%	-	-	-	-	0	-	4	4	13.6%	-	-	-	242	238	1.7%
Santiago del Estero	19	18	5.3%	-	-	-	-	-	-	19	18	5.3%	-	10	-	374	285	31.2%
Tucumán	71	62	15.6%	0	0	-	0	0	-	72	62	15.5%	0	-	-	697	543	28.4%
Viedma	2	2	5.5%	-	-	-	1	1	-	3	3	2.4%	-	-	-	89	112	-20.5%
Villa Mercedes	-	0	-	-	-	-	-	0	-	-	0	-	-	-	-	234	267	-12.4%
Termas de Río Hondo	-	2	-	-	0	-	-	-	-	-	3	-	-	0	-	-	118	-
Bahía Blanca	22	12	82.5%	-	-	-	1	1	14.0%	23	13	76.9%	10	10	4.5%	332	291	14.1%
Neuquén	94	79	18.3%	0	0	-	2	3	-35.6%	95	82	16.5%	29	25	17.4%	962	1,047	-8.1%
Total Argentina	2,710	2,187	23.9%	968	774	25.0%	137	119	14.9%	3,815	3,080	23.8%	15,973	15,147	5.4%	41,025	35,748	14.8%
Italy																		
Pisa	129	141	-8.6%	479	413	16.0%	-	1	-	608	554	9.6%	744	972	-23.5%	4,626	4,395	5.3%
Florence	54	22	143.8%	278	228	21.9%	-	-	-	332	250	32.7%	7	6	33.0%	3,840	3,173	21.0%
Total Italy	183	163	12.1%	756	641	18.1%	-	1	-	939	804	16.8%	751	977	-23.1%	8,466	7,568	11.9%
Brazil																		

	Domestic Passenger Traffic (in thousands)			International Passenger Traffic (in thousands)			Transit Passengers (in thousands)			Total Passenger Traffic (in thousands)			Cargo Volume (in tons) ⁽³⁾			Aircraft Movements		
	Aug-23	Aug -22	% Var.	Aug-23	Aug -22	% Var.	Aug-23	Aug -22	% Var.	Aug-23	Aug -22	% Var.	Aug-23	Aug -22	% Var.	Aug-23	Aug -22	% Var.
Natal	165	198	-16.5%	9	6	58.3%	3	2	77.9%	178	206	-13.6%	589	400	47.4%	1,407	1,557	-9.6%
Brasilia ⁽²⁾	819	682	20.2%	47	46	3.2%	443	500	-11.4%	1,310	1,227	6.7%	5,289	3,160	67.4%	12,223	11,197	9.2%
Total Brazil	985	880	11.9%	56	51	9.2%	446	502	-11.0%	1,487	1,433	3.8%	5,878	3,559	65.1%	13,630	12,754	6.9%
Uruguay																		
Carrasco	0	0	-	147	109	34.7%	4	1	292.9%	152	111	37.2%	2,519	2,568	-1.9%	1,686	1,472	14.5%
Punta del Este	0	0	-	6	6	-3.8%	-	-	-	6	6	-3.6%	-	-	-	578	487	18.7%
Total Uruguay	0	0	-	153	115	32.7%	4	1	292.9%	158	117	35.1%	2,519	2,568	-1.9%	2,264	1,959	15.6%
Ecuador																		
Guayaquil	174	173	0.7%	207	195	6.0%	9	7	23.7%	389	374	3.9%	2,408	2,120	13.6%	6,190	6,684	-7.4%
Galápagos	56	49	15.6%	-	-	-	-	-	-	56	49	15.6%	501	393	27.4%	662	488	35.7%
Total Ecuador	230	221	3.9%	207	195	6.0%	9	7	23.7%	445	423	5.2%	2,909	2,514	15.7%	6,852	7,172	-4.5%
Armenia																		
Zvartnots	-	-	-	637	453	40.8%	-	-	-	637	453	40.8%	2,944	2,072	42.1%	4,660	4,083	14.1%
Shirak	-	-	-	10	3	202.4%	-	-	-	10	3	202.4%	-	-	-	61	40	52.5%
Total Armenia	-	-	-	647	456	41.9%	-	-	-	647	456	41.9%	2,944	2,072	42.1%	4,721	4,123	14.5%
Total CAAP	4,108	3,451	19%	2,787	2,233	25%	596	629	-5%	7,491	6,313	19%	30,974	26,837	15%	76,958	69,324	11%

(1) Note that preliminary passenger traffic figures for January 2020 for Ezeiza Airport, in Argentina, were adjusted to include additional inbound passengers not accounted for in the initial count, for an average of approximately 5% of total passenger traffic at Ezeiza Airport and 1% of total traffic at CAAP, during that period. Importantly, inbound traffic does not affect revenues, as tariffs are applicable on departure passengers.

(2) Preliminary data on 1,256 flights in January 2020 at Brasilia Airport, due to delays in the submission of information by third parties.

(3) Cargo volumes in Uruguay were rectified from January to June 2020, to reflect all cargo passing through the cargo terminal, instead of air cargo only.

Operating Statistics by Airport: Traffic, Cargo and Aircraft Movements (2023 vs. 2019)

	Domestic Passenger Traffic (in thousands)			International Passenger Traffic (in thousands)			Transit Passengers (in thousands)			Total Passenger Traffic (in thousands)			Cargo Volume (in tons) ⁽³⁾			Aircraft Movements		
	Aug-23	Aug -19	% Var.	Aug-23	Aug -19	% Var.	Aug-23	Aug -19	% Var.	Aug-23	Aug -19	% Var.	Aug-23	Aug -19	% Var.	Aug-23	Aug -19	% Var.
Argentina																		
Aeroparque	971	999	-3%	273	20	1290%	91	70	29%	1,335	1,089	23%	100	114	-13%	10,834	9,771	11%
Bariloche	319	233	37%	9	11	-11%	0	-	-	329	244	35%	-	-	-	2,221	1,753	27%
Catamarca	7	5	21%	-	-	-	1	0	-	7	5	34%	4	-	-	286	159	80%
C. Rivadavia	48	52	-8%	-	-	-	1	0	-	48	52	-7%	47	88	-47%	571	828	-31%
Córdoba	214	223	-4%	38	56	-33%	5	16	-71%	256	295	-13%	82	261	-69%	2,382	2,663	-11%
El Palomar	-	158	-	-	20	-	-	-	-	-	178	-	-	-	-	410	1,147	-64%
Esquel	7	5	30%	-	-	-	-	0	-	7	5	30%	-	-	-	73	82	-11%
Ezeiza ⁽⁴⁾	305	83	267%	603	955	-37%	27	24	13%	935	1,062	-12%	15,003	16,261	-8%	6,291	7,249	-13%
Formosa	9	11	-18%	-	-	-	-	-	-	9	11	-18%	-	15	-	163	207	-21%
General Pico	-	0	-	-	-	-	-	0	-	-	0	-	-	-	-	106	398	-73%
Iguazú	127	137	-7%	-	1	-	0	2	-	127	140	-9%	-	-	-	919	1,116	-18%
Jujuy	47	33	41%	-	0	-	1	0	-	48	34	42%	-	10	-	424	403	5%
La Rioja	7	5	26%	-	-	-	1	-	-	8	5	37%	10	-	-	252	131	92%
Malargüe	-	0	-	-	-	-	-	-	-	-	0	-	-	-	-	350	21	1567%
Mar del Plata	19	27	-27%	-	0	-	2	1	18%	21	28	-25%	0	8	-	565	590	-4%
Mendoza	152	154	-1%	44	38	16%	4	2	110%	199	193	3%	39	52	-24%	1,803	1,913	-6%
Paraná	4	6	-31%	-	0	-	-	-	-	4	6	-32%	-	-	-	395	231	71%
Posadas	33	30	9%	-	0	-	-	-	-	33	30	9%	7	32	-79%	363	455	-20%
Pto Madryn	17	8	123%	-	-	-	-	-	-	17	8	123%	2	-	-	129	92	40%
Reconquista	1	0	-	-	0	-	-	0	-	1	0	-	-	-	-	332	329	1%
Resistencia	21	23	-6%	-	-	-	0	3	-	22	25	-14%	11	34	-68%	377	337	12%
Río Cuarto	2	4	-33%	-	-	-	-	-	-	2	4	-33%	1	3	-56%	70	70	0%

	Domestic Passenger Traffic (in thousands)			International Passenger Traffic (in thousands)			Transit Passengers (in thousands)			Total Passenger Traffic (in thousands)			Cargo Volume (in tons) ^(a)			Aircraft Movements		
	Aug-23	Aug -19	% Var.	Aug-23	Aug -19	% Var.	Aug-23	Aug -19	% Var.	Aug-23	Aug -19	% Var.	Aug-23	Aug -19	% Var.	Aug-23	Aug -19	% Var.
Río Gallegos	20	21	-8%	-	-	-	1	1	-	21	22	-7%	27	43	-38%	342	302	13%
Río Grande	13	11	20%	-	-	-	0	0	-	13	11	19%	577	32	1700%	257	225	14%
Salta	124	131	-5%	1	5	-	0	5	-	125	140	-11%	24	90	-73%	1,371	1,317	4%
San Fernando	-	1	-	-	1	-	-	-	-	-	2	-	-	-	-	5,593	3,893	44%
San Juan	20	17	15%	-	-	-	-	-	-	20	17	15%	-	-	-	224	165	36%
San Luis	6	6	0%	-	-	-	-	-	-	6	6	0%	-	12	-	246	94	162%
San Rafael	4	6	-28%	-	-	-	-	-	-	4	6	-28%	-	1	-	746	411	82%
Santa Rosa	4	5	-6%	-	-	-	-	0	-	4	5	-6%	-	0	-	242	232	4%
Santiago del Estero	19	13	42%	-	-	-	-	-	-	19	13	42%	-	13	-	374	240	56%
Tucumán	71	84	-15%	0	4	-	0	2	-	72	89	-20%	0	77	-	697	844	-17%
Viedma	2	3	-29%	-	-	-	1	-	-	3	3	-4%	-	-	-	89	55	62%
Villa Mercedes	-	0	-	-	-	-	-	-	-	-	0	-	-	-	-	234	258	-9%
Termas de Río Hondo	-	1	-	-	-	-	-	-	-	-	1	-	-	1	-	-	46	-
Bahía Blanca	22	28	-20%	-	-	-	1	2	-38%	23	30	-21%	10	29	-66%	332	390	-15%
Neuquén	94	108	-14%	0	3	-	2	2	4%	95	113	-15%	29	70	-58%	962	1,285	-25%
Total Argentina	2,710	2,633	3%	968	1,112	-13%	137	129	6%	3,815	3,875	-2%	15,973	17,247	-7%	41,025	39,702	3%
Italy																		
Pisa	129	126	2%	479	499	-4%	-	0	-	608	625	-3%	744	819	-9%	4,626	4,943	-6%
Florence	54	31	72%	278	245	13%	-	-	-	332	277	19.8%	7	9	-16%	3,840	3,436	12%
Total Italy	183	157	16%	756	744	2%	-	0	-	939	902	4.1%	751	827	-9%	8,466	8,379	1%
Brazil																		
Natal	165	171	-3%	9	7	30%	3	-	-	178	178	0%	589	820	-28%	1,407	1,391	1%

	Domestic Passenger Traffic (in thousands)			International Passenger Traffic (in thousands)			Transit Passengers (in thousands)			Total Passenger Traffic (in thousands)			Cargo Volume (in tons) ⁽³⁾			Aircraft Movements		
	Aug-23	Aug -19	% Var.	Aug-23	Aug -19	% Var.	Aug-23	Aug -19	% Var.	Aug-23	Aug -19	% Var.	Aug-23	Aug -19	% Var.	Aug-23	Aug -19	% Var.
Brasilia ⁽²⁾	819	742	10%	47	45	5%	443	502	-12%	1,310	1,289	2%	5,289	6,002	-12%	12,223	11,979	2%
Total Brazil	985	913	8%	56	51	9%	446	502	-11%	1,487	1,467	1%	5,878	6,823	-14%	13,630	13,370	2%
Uruguay																		
Carrasco	0	0	-	147	165	-10%	4	2	124%	152	167	-9%	2,519	2,280	10%	1,686	1,795	-6%
Punta del Este	0	0	-	6	6	-2%	-	-	-	6	6	-1%	-	-	-	578	289	100%
Total Uruguay	0	0	-	153	171	-10%	4	2	124%	158	173	-9%	2,519	2,280	10%	2,264	2,084	9%
Ecuador																		
Guayaquil	174	157	11%	207	203	2%	9	10	-14%	389	369	5%	2,408	2,518	-4%	6,190	6,875	-10%
Galápagos	56	49	15%	-	-	-	-	-	-	56	49	15%	501	415	21%	662	548	21%
Total Ecuador	230	205	12%	207	203	2%	9	10	-14%	445	418	7%	2,909	2,933	-1%	6,852	7,423	-8%
Armenia																		
Zvartnots	-	-	-	637	384	66%	-	-	-	637	384	66%	2,944	1,773	66%	4,660	3,126	49%
Shirak	-	-	-	10	16	-39%	-	-	-	10	16	-39%	-	-	-	61	95	-36%
Total Armenia	-	-	-	647	400	62%	-	-	-	647	400	62%	2,944	1,773	66%	4,721	3,221	47%
Peru																		
Arequipa	-	199	-	-	2	-	-	-	-	-	201	-	-	265	-	-	1,526	-
Juliaca	-	45	-	-	0	-	-	-	-	-	45	-	-	87	-	-	366	-
Puerto Maldonado	-	34	-	-	-	-	-	-	-	-	34	-	-	62	-	-	287	-
Tacna	-	49	-	-	-	-	-	-	-	-	49	-	-	112	-	-	374	-
Ayacucho	-	30	-	-	-	-	-	-	-	-	30	-	-	14	-	-	341	-

	Domestic Passenger Traffic (in thousands)			International Passenger Traffic (in thousands)			Transit Passengers (in thousands)			Total Passenger Traffic (in thousands)			Cargo Volume (in tons) ⁽³⁾			Aircraft Movements		
	Aug-23	Aug -19	% Var.	Aug-23	Aug -19	% Var.	Aug-23	Aug -19	% Var.	Aug-23	Aug -19	% Var.	Aug-23	Aug -19	% Var.	Aug-23	Aug -19	% Var.
Total Peru	-	356	-	-	2	-	-	-	-	-	358	-	-	540	-	-	2,894	-
Total CAAP	4,108	4,265	-4%	2,787	2,683	4%	596	644	-7%	7,491	7,592	-1%	30,974	32,423	-4%	76,958	77,073	0%

(1) Note that preliminary passenger traffic figures for 2019, as well as January 2020 for Ezeiza Airport, in Argentina, were adjusted to include additional inbound passengers not accounted for in the initial count, for an average of approximately 5% of total passenger traffic at Ezeiza Airport and 1% of total traffic at CAAP, during that period. Importantly, inbound traffic does not affect revenues, as tariffs are applicable on departure passengers.

(2) Preliminary data on 1,256 flights in January 2020 at Brasilia Airport, due to delays in the submission of information by third parties.

Operating Statistics by Airport: Traffic, Cargo and Aircraft Movements (2023 vs. 2022)

	Domestic Passenger Traffic (in thousands)			International Passenger Traffic (in thousands)			Transit Passengers (in thousands)			Total Passenger Traffic (in thousands)			Cargo Volume (in tons) ⁽³⁾			Aircraft Movements		
	YTD-23	YTD-22	% Var.	YTD-23	YTD-22	% Var.	YTD-23	YTD-22	% Var.	YTD-23	YTD-22	% Var.	YTD-23	YTD-22	% Var.	YTD-23	YTD-22	% Var.
Argentina																		
Aeroparque	7,513	6,086	23.5%	2,043	1,399	46.0%	664	484	37.0%	10,220	7,970	28.2%	932	1,045	-10.8%	83,927	65,163	28.8%
Bariloche	1,647	1,329	23.9%	46	16	178.8%	3	4	-26.4%	1,696	1,350	25.7%	-	-	-	12,529	10,272	22.0%
Catamarca	50	40	26.0%	-	0	-	4	1	-	54	41	33.3%	35	40	-13.2%	1,837	1,723	6.6%
C. Rivadavia	370	277	33.5%	0	0	-	6	1	359.0%	376	279	35.0%	303	364	-16.8%	4,745	3,820	24.2%
Córdoba	1,565	1,132	38.2%	334	194	71.9%	19	24	-21.4%	1,918	1,351	42.0%	861	855	0.7%	18,287	13,809	32.4%
El Palomar	0	2	-	-	0	-	-	-	-	0	2	-	-	-	-	2,757	2,233	23.5%
Esquel	56	52	7.4%	0	0	-	0	0	-	56	52	7.0%	-	-	-	778	793	-1.9%
Ezeiza ⁽⁴⁾	1,949	1,102	76.9%	4,805	3,322	44.6%	173	116	48.9%	6,927	4,540	52.6%	116,712	115,378	1.2%	46,820	31,855	47.0%
Formosa	68	56	20.3%	0	0	-	-	-	-	68	56	20.2%	25	24	6.6%	1,109	1,057	4.9%
General Pico	-	0	-	-	-	-	-	0	-	-	0	-	-	-	-	568	448	26.8%
Iguazú	1,017	734	38.6%	0	0	-	1	3	-58.6%	1,018	737	38.2%	-	-	-	7,677	5,775	32.9%
Jujuy	388	300	29.4%	0	0	-	5	2	179.0%	393	302	30.4%	29	44	-34.1%	3,549	2,926	21.3%
La Rioja	54	40	32.5%	-	0	-	5	1	-	59	41	42.9%	32	60	-47.4%	1,561	1,276	22.3%
Malargüe	0	1	-	-	0	-	0	0	-	1	2	-	-	-	-	745	796	-6.4%
Mar del Plata	202	183	10.3%	0	0	-	8	6	38.0%	210	189	11.1%	1	48	-	5,082	4,044	25.7%
Mendoza	1,208	870	38.9%	328	165	98.7%	16	19	-16.9%	1,553	1,054	47.3%	313	282	11.0%	14,197	10,243	38.6%
Paraná	33	21	53.6%	0	0	-	0	0	-	33	21	54.9%	-	-	-	2,606	2,028	28.5%
Posadas	276	141	96.2%	0	0	-	0	0	-	276	141	95.7%	55	33	68.7%	3,111	1,848	68.3%
Pto Madryn	121	54	123.8%	-	-	-	0	1	-	122	55	121.2%	20	20	-0.4%	993	658	50.9%
Reconquista	2	0	-	-	-	-	-	0	-	2	0	-	-	-	-	2,001	2,053	-2.5%
Resistencia	117	146	-20.2%	0	0	-	3	4	-33.0%	119	150	-20.6%	65	96	-32.5%	1,859	2,044	-9.1%
Río Cuarto	19	15	27.1%	-	-	-	0	6	-	19	21	-10.5%	5	7	-28.4%	517	649	-20.3%

	Domestic Passenger Traffic (in thousands)			International Passenger Traffic (in thousands)			Transit Passengers (in thousands)			Total Passenger Traffic (in thousands)			Cargo Volume (in tons) ⁽³⁾			Aircraft Movements		
	YTD-23	YTD-22	% Var.	YTD-23	YTD-22	% Var.	YTD-23	YTD-22	% Var.	YTD-23	YTD-22	% Var.	YTD-23	YTD-22	% Var.	YTD-23	YTD-22	% Var.
Río Gallegos	156	132	18.4%	0	-	-	6	4	49.7%	162	136	19.4%	176	149	18.4%	3,219	2,490	29.3%
Río Grande	100	80	25.0%	0	-	-	1	1	-4.0%	101	81	24.6%	1,808	132	1268.6%	1,709	1,824	-6.3%
Salta	971	771	26.0%	6	3	91.4%	3	8	-63.7%	980	782	25.3%	146	196	-25.6%	10,541	7,613	38.5%
San Fernando	4	17	-73.8%	7	13	-49.7%	-	-	-	11	30	-63.2%	-	-	-	40,811	37,968	7.5%
San Juan	141	124	13.6%	0	0	-	0	0	-	142	125	13.4%	-	-	-	1,784	1,747	2.1%
San Luis	47	48	-3.6%	0	-	-	-	0	-	47	48	-3.6%	240	155	55.1%	2,002	1,962	2.0%
San Rafael	27	37	-25.9%	-	-	-	-	0	-	27	37	-25.9%	-	-	-	3,463	3,755	-7.8%
Santa Rosa	34	26	33.5%	-	-	-	0	4	-	34	29	17.0%	-	-	-	2,194	1,920	14.3%
Santiago del Estero	158	110	44.0%	0	-	-	0	0	-	159	110	44.1%	35	125	-71.9%	3,336	1,974	69.0%
Tucumán	567	446	27.3%	0	0	-	1	1	-	568	447	27.1%	340	350	-3.0%	5,317	3,882	37.0%
Viedma	24	22	7.4%	-	-	-	5	6	-24.3%	29	28	0.5%	-	-	-	773	746	3.6%
Villa Mercedes	0	1	-	-	-	-	-	1	-	0	2	-	-	-	-	1,424	1,684	-15.4%
Termas de Río Hondo	11	18	-40.0%	0	0	-	0	-	-	11	18	-40.3%	-	2	-	315	714	-55.9%
Bahía Blanca	174	115	51.6%	-	-	-	11	4	147.8%	185	119	55.1%	127	95	33.7%	2,616	2,124	23.2%
Neuquén	739	525	40.7%	0	0	-	11	17	-33.9%	750	543	38.3%	227	160	42.1%	8,184	7,324	11.7%
Total Argentina	19,810	15,053	31.6%	7,570	5,115	48.0%	946	720	31.3%	28,325	20,889	35.6%	122,487	119,660	2.4%	304,943	243,240	25.4%
Italy																		
Pisa	897	961	-6.7%	2,571	2,036	26.3%	3	2	28.6%	3,471	3,000	15.7%	8,525	9,690	-12.0%	27,047	25,700	5.2%
Florence	269	89	203.3%	1,753	1,322	32.6%	0	0	-	2,021	1,410	43.3%	98	102	-3.5%	25,440	20,492	24.1%
Total Italy	1,166	1,050	11.1%	4,324	3,358	28.8%	3	2	24.2%	5,493	4,410	24.5%	8,624	9,792	-11.9%	52,487	46,192	13.6%
Brazil																		

	Domestic Passenger Traffic (in thousands)			International Passenger Traffic (in thousands)			Transit Passengers (in thousands)			Total Passenger Traffic (in thousands)			Cargo Volume (in tons) ⁽³⁾			Aircraft Movements		
	YTD-23	YTD-22	% Var.	YTD-23	YTD-22	% Var.	YTD-23	YTD-22	% Var.	YTD-23	YTD-22	% Var.	YTD-23	YTD-22	% Var.	YTD-23	YTD-22	% Var.
Natal	1,444	1,415	2.0%	56	36	56.3%	11	35	-67.9%	1,511	1,487	1.7%	4,892	3,530	38.6%	11,914	11,983	-0.6%
Brasilia ⁽²⁾	5,831	5,343	9.1%	362	240	50.6%	3,688	2,954	24.9%	9,881	8,537	15.7%	38,096	32,049	18.9%	94,630	81,124	16.6%
Total Brazil	7,274	6,759	7.6%	418	276	51.4%	3,700	2,989	23.8%	11,392	10,024	13.6%	42,987	35,579	20.8%	106,544	93,107	14.4%
Uruguay																		
Carrasco	1	1	-	1,148	794	44.6%	14	5	171.6%	1,164	801	45.4%	20,930	21,950	-4.6%	13,512	10,827	24.8%
Punta del Este	0	0	-	88	79	12.3%	-	-	-	89	79	12.3%	-	-	-	7,483	6,698	11.7%
Total Uruguay	2	1	44.2%	1,237	873	41.7%	14	5	171.6%	1,253	880	42.4%	20,930	21,950	-4.6%	20,995	17,525	19.8%
Ecuador																		
Guayaquil	1,355	1,049	29.2%	1,465	1,315	11.4%	51	48	4.4%	2,871	2,413	19.0%	17,889	19,779	-9.6%	48,297	47,303	2.1%
Galápagos	405	327	23.6%	-	-	-	-	-	-	405	327	23.6%	3,850	2,916	32.0%	4,810	3,818	26.0%
Total Ecuador	1,760	1,376	27.9%	1,465	1,315	11.4%	51	48	4.4%	3,276	2,740	19.6%	21,740	22,695	-4.2%	53,107	51,121	3.9%
Armenia																		
Zvartnots	-	-	-	3,587	2,190	63.8%	-	-	-	3,587	2,190	63.8%	20,948	11,995	74.6%	29,595	21,062	40.5%
Shirak	-	-	-	59	40	49.8%	-	-	-	59	40	49.8%	-	-	-	353	354	-0.3%
Total Armenia	-	-	-	3,647	2,229	63.6%	-	-	-	3,647	2,229	63.6%	20,948	11,995	74.6%	29,948	21,416	39.8%
Total CAAP	30,012	24,239	24%	18,661	13,167	42%	4,713	3,765	25%	53,385	41,172	30%	237,716	221,672	7%	568,024	472,601	20%

(1) Note that preliminary passenger traffic figures for January 2020 for Ezeiza Airport, in Argentina, were adjusted to include additional inbound passengers not accounted for in the initial count, for an average of approximately 5% of total passenger traffic at Ezeiza Airport and 1% of total traffic at CAAP, during that period. Importantly, inbound traffic does not affect revenues, as tariffs are applicable on departure passengers.

(2) Preliminary data on 1,256 flights in January 2020 at Brasilia Airport, due to delays in the submission of information by third parties.

(3) Cargo volumes in Uruguay were rectified from January to June 2020, to reflect all cargo passing through the cargo terminal, instead of air cargo only.

Operating Statistics by Airport: Traffic, Cargo and Aircraft Movements (2023 vs. 2019)

	Domestic Passenger Traffic (in thousands)			International Passenger Traffic (in thousands)			Transit Passengers (in thousands)			Total Passenger Traffic (in thousands)			Cargo Volume (in tons) ⁽³⁾			Aircraft Movements		
	YTD-23	YTD -19	% Var.	YTD-23	YTD -19	% Var.	YTD-23	YTD -19	% Var.	YTD-23	YTD -19	% Var.	YTD-23	YTD -19	% Var.	YTD-23	YTD -19	% Var.
Argentina																		
Aeroparque	7,513	7,284	3.1%	2,043	574	256%	664	586	13%	10,220	8,445	21%	932	971	-4%	83,927	76,508	10%
Bariloche	1,647	1,206	37%	46	32	42%	3	5	-44%	1,696	1,244	36%	-	70	-	12,529	9,799	28%
Catamarca	50	43	17%	-	-	-	4	2	91%	54	45	21%	35	55	-37%	1,837	1,501	22%
C. Rivadavia	370	437	-15%	0	0	-	6	3	77%	376	441	-15%	303	705	-57%	4,745	6,654	-29%
Córdoba	1,565	1,789	-12%	334	515	-35%	19	113	-83%	1,918	2,416	-21%	861	1,236	-30%	18,287	21,779	-16%
El Palomar	0	963	-	-	162	-	-	-	-	0	1,125	-	-	-	-	2,757	7,953	-65%
Esquel	56	36	54%	0	0	-	0	0	-	56	36	54%	-	-	-	778	824	-6%
Ezeiza ⁽⁴⁾	1,949	603	223%	4,805	7,505	-36%	173	170	2%	6,927	8,278	-16%	116,712	138,151	-16%	46,820	56,583	-17%
Formosa	68	72	-6%	0	0	-	-	0	-	68	72	-6%	25	110	-77%	1,109	1,250	-11%
General Pico	-	1	-	-	-	-	-	0	-	-	1	-	-	-	-	568	2,446	-77%
Iguazú	1,017	1,021	0%	0	1	-	1	3	-65%	1,018	1,025	-1%	-	-	-	7,677	8,492	-10%
Jujuy	388	264	47%	0	0	-	5	2	222%	393	266	48%	29	79	-63%	3,549	3,063	16%
La Rioja	54	43	24%	-	-	-	5	2	159%	59	45	30%	32	80	-61%	1,561	1,121	39%
Malargüe	0	1	-	-	0	-	0	-	-	1	1	-	-	-	-	745	156	378%
Mar del Plata	202	274	-26%	0	0	-	8	13	-41%	210	288	-27%	1	112	-	5,082	5,813	-13%
Mendoza	1,208	1,195	1%	328	352	-7%	16	15	9%	1,553	1,561	-1%	313	557	-44%	14,197	15,248	-7%
Paraná	33	40	-18%	0	0	-	0	0	-	33	40	-17%	-	-	-	2,606	1,621	61%
Posadas	276	222	25%	0	0	-	0	1	-	276	223	24%	55	222	-75%	3,111	3,128	-1%
Pto Madryn	121	57	112%	-	-	-	0	0	-	122	58	111%	20	-	-	993	583	70%
Reconquista	2	4	-38%	-	0	-	-	0	-	2	4	-40%	-	-	-	2,001	2,191	-9%
Resistencia	117	181	-36%	0	0	-	3	21	-87%	119	203	-41%	65	263	-75%	1,859	2,790	-33%
Río Cuarto	19	26	-27%	-	-	-	0	0	-	19	26	-27%	5	30	-82%	517	550	-6%

	Domestic Passenger Traffic (in thousands)			International Passenger Traffic (in thousands)			Transit Passengers (in thousands)			Total Passenger Traffic (in thousands)			Cargo Volume (in tons) ⁽³⁾			Aircraft Movements		
	YTD-23	YTD-19	% Var.	YTD-23	YTD-19	% Var.	YTD-23	YTD-19	% Var.	YTD-23	YTD-19	% Var.	YTD-23	YTD-19	% Var.	YTD-23	YTD-19	% Var.
Río Gallegos	156	173	-10%	0	0	-	6	6	-1%	162	179	-10%	176	311	-43%	3,219	2,265	42%
Río Grande	100	100	0%	0	0	-	1	1	-11%	101	101	0%	1,808	178	917%	1,709	1,558	10%
Salta	971	870	12%	6	53	-89%	3	30	-90%	980	953	3%	146	664	-78%	10,541	9,363	13%
San Fernando	4	9	-52%	7	7	-12%	-	-	-	11	17	-34%	-	-	-	40,811	28,133	45%
San Juan	141	89	58%	0	0	-	0	-	-	142	89	58%	-	-	-	1,784	1,050	70%
San Luis	47	52	-9%	0	-	-	-	-	-	47	52	-9%	240	99	142%	2,002	813	146%
San Rafael	27	37	-27%	-	-	-	-	-	-	27	37	-27%	-	384	-	3,463	3,630	-5%
Santa Rosa	34	32	6%	-	-	-	0	0	-	34	32	6%	-	7	-	2,194	1,743	26%
Santiago del Estero	158	103	53%	0	-	-	0	0	-	159	103	53%	35	111	-68%	3,336	1,978	69%
Tucumán	567	603	-6%	0	45	-	1	10	-	568	657	-14%	340	1,297	-74%	5,317	6,250	-15%
Viedma	24	26	-9%	-	-	-	5	-	-	29	26	9%	-	-	-	773	472	64%
Villa Mercedes	0	0	-	-	-	-	-	0	-	0	0	-	-	-	-	1,424	1,128	26%
Termas de Río Hondo	11	11	0%	0	0	-	0	-	-	11	11	0%	-	5	-	315	471	-33%
Bahía Blanca	174	234	-26%	-	-	-	11	17	-36%	185	251	-26%	127	229	-44%	2,616	3,512	-26%
Neuquén	739	770	-4%	0	22	-	11	8	41%	750	799	-6%	227	518	-56%	8,184	9,318	-12%
Total Argentina	19,810	18,873	5%	7,570	9,269	-18%	946	1,009	-6%	28,325	29,151	-3%	122,487	146,445	-16%	304,943	301,737	1%
Italy																		
Pisa	897	936	-4%	2,571	2,737	-6%	3	3	-25%	3,471	3,676	-6%	8,525	8,341	2%	27,047	29,540	-8%
Florence	269	251	7%	1,753	1,641	7%	0	0	-	2,021	1,893	7%	98	153	-36%	25,440	24,043	6%
Total Italy	1,166	1,187	-2%	4,324	4,379	-1%	3	3	-25%	5,493	5,569	-1%	8,624	8,494	2%	52,487	53,583	-2%
Brazil																		
Natal	1,444	1,477	-2%	56	55	2%	11	-	-	1,511	1,532	-1%	4,892	8,852	-45%	11,914	11,663	2%

	Domestic Passenger Traffic (in thousands)			International Passenger Traffic (in thousands)			Transit Passengers (in thousands)			Total Passenger Traffic (in thousands)			Cargo Volume (in tons) ⁽³⁾			Aircraft Movements		
	YTD-23	YTD-19	% Var.	YTD-23	YTD-19	% Var.	YTD-23	YTD-19	% Var.	YTD-23	YTD-19	% Var.	YTD-23	YTD-19	% Var.	YTD-23	YTD-19	% Var.
Brasilia ⁽²⁾	5,831	6,054	-4%	362	408	-11%	3,688	4,470	-17%	9,881	10,932	-9.6%	38,096	53,653	-29%	94,630	94,391	0%
Total Brazil	7,274	7,531	-3%	418	463	-10%	3,700	4,470	-17%	11,392	12,464	-9%	42,987	62,505	-31%	106,544	106,054	0%
Uruguay																		
Carrasco	1	0	-	1,148	1,334	-14%	14	9	62%	1,164	1,343	-13%	20,930	18,816	11%	13,512	14,735	-8%
Punta del Este	0	0	-	88	146	-40%	-	-	-	89	146	-39%	-	-	-	7,483	5,336	40%
Total Uruguay	2	0	-	1,237	1,480	-16%	14	9	62%	1,253	1,490	-16%	20,930	18,816	11%	20,995	20,071	5%
Ecuador																		
Guayaquil	1,355	1,222	11%	1,465	1,408	4%	51	54	-7%	2,871	2,684	7%	17,889	23,760	-25%	48,297	51,033	-5%
Galápagos	405	369	10%	-	-	-	-	-	-	405	369	10%	3,850	3,284	17%	4,810	4,069	18%
Total Ecuador	1,760	1,591	11%	1,465	1,408	4%	51	54	-7%	3,276	3,053	7%	21,740	27,044	-20%	53,107	55,102	-4%
Armenia																		
Zvartnots	-	-	-	3,587	1,993	80%	-	-	-	3,587	1,993	80%	20,948	11,606	81%	29,595	17,053	74%
Shirak	-	-	-	59	99	-40%	-	-	-	59	99	-40%	-	-	-	353	583	-39%
Total Armenia	-	-	-	3,647	2,092	74%	-	-	-	3,647	2,092	74%	20,948	11,606	81%	29,948	17,636	70%
Peru																		
Arequipa	-	1,295	-	-	9	-	-	-	-	-	1,304	-	-	1,570	-	-	10,420	-
Juliaca	-	303	-	-	0	-	-	-	-	-	303	-	-	583	-	-	2,636	-
Puerto Maldonado	-	213	-	-	0	-	-	-	-	-	213	-	-	431	-	-	2,003	-
Tacna	-	314	-	-	0	-	-	-	-	-	314	-	-	631	-	-	2,888	-
Ayacucho	-	176	-	-	-	-	-	-	-	-	176	-	-	124	-	-	2,218	-

	Domestic Passenger Traffic (in thousands)			International Passenger Traffic (in thousands)			Transit Passengers (in thousands)			Total Passenger Traffic (in thousands)			Cargo Volume (in tons) ⁽³⁾			Aircraft Movements		
	YTD-23	YTD -19	% Var.	YTD-23	YTD -19	% Var.	YTD-23	YTD -19	% Var.	YTD-23	YTD -19	% Var.	YTD-23	YTD -19	% Var.	YTD-23	YTD -19	% Var.
Total Peru	-	2,301	-	-	9	-	-	-	-	-	2,311	-	-	3,340	-	-	20,165	-
Total CAAP	30,012	31,484	-5%	18,661	19,100	-2%	4,713	5,546	-15%	53,385	56,130	-5%	237,716	278,250	-15%	568,024	574,348	-1%

- (1) Note that preliminary passenger traffic figures for 2019, as well as January 2020 for Ezeiza Airport, in Argentina, were adjusted to include additional inbound passengers not accounted for in the initial count, for an average of approximately 5% of total passenger traffic at Ezeiza Airport and 1% of total traffic at CAAP, during that period. Importantly, inbound traffic does not affect revenues, as tariffs are applicable on departure passengers.
- (2) Preliminary data on 1,256 flights in January 2020 at Brasilia Airport, due to delays in the submission of information by third parties.

Operating Statistics by Segment: Traffic, Cargo and Aircraft Movement (2023 vs. 2022)

	Aug'23	Aug'22	% Var.	YTD'23	YTD'22	% Var.
Argentina⁽¹⁾						
Domestic Passengers (thousands)	2,710	2,187	23.9%	19,810	15,053	31.6%
International Passengers (thousands)	968	774	25.0%	7,570	5,115	48.0%
Transit passengers (thousands)	137	119	14.9%	946	720	31.3%
Total passengers (thousands)	3,815	3,080	23.8%	28,325	20,889	35.6%
Cargo volume (tons)	15,973	15,147	5.4%	122,487	119,660	2.4%
Aircraft movements	41,025	35,748	14.8%	304,943	243,240	25.4%
Italy						
Domestic Passengers (thousands)	183	163	12.1%	1,166	1,050	11.1%
International Passengers (thousands)	756	641	18.1%	4,324	3,358	28.8%
Transit passengers (thousands)	-	1	-	3	2	24.2%
Total passengers (thousands)	939	804	16.8%	5,493	4,410	24.5%
Cargo volume (tons)	751	977	-23.1%	8,624	9,792	-11.9%
Aircraft movements	8,466	7,568	11.9%	52,487	46,192	13.6%
Brazil ⁽²⁾						
Domestic Passengers (thousands)	985	880	11.9%	7,274	6,759	7.6%
International Passengers (thousands)	56	51	9.2%	418	276	51.4%
Transit passengers (thousands)	446	502	-11.0%	3,700	2,989	23.8%
Total passengers (thousands)	1,487	1,433	3.8%	11,392	10,024	13.6%
Cargo volume (tons)	5,878	3,559	65.1%	42,987	35,579	20.8%
Aircraft movements	13,630	12,754	6.9%	106,544	93,107	14.4%
Uruguay⁽³⁾						
Domestic Passengers (thousands)	0	0	-	2	1	44.2%
International Passengers (thousands)	153	115	32.7%	1,237	873	41.7%
Transit passengers (thousands)	4	1	292.9%	14	5	171.6%
Total passengers (thousands)	158	117	35.1%	1,253	880	42.4%
Cargo volume (tons)	2,519	2,568	-1.9%	20,930	21,950	-4.6%
Aircraft movements	2,264	1,959	15.6%	20,995	17,525	19.8%
Ecuador						
Domestic Passengers (thousands)	230	221	3.9%	1,760	1,376	27.9%
International Passengers (thousands)	207	195	6.0%	1,465	1,315	11.4%
Transit passengers (thousands)	9	7	23.7%	51	48	4.4%
Total passengers (thousands)	445	423	5.2%	3,276	2,740	19.6%
Cargo volume (tons)	2,909	2,514	15.7%	21,740	22,695	-4.2%
Aircraft movements	6,852	7,172	-4.5%	53,107	51,121	3.9%
Armenia						
Domestic Passengers (thousands)	-	-	-	-	-	-
International Passengers (thousands)	647	456	41.9%	3,647	2,229	63.6%
Transit passengers (thousands)	-	-	-	-	-	-
Total passengers (thousands)	647	456	41.9%	3,647	2,229	63.6%
Cargo volume (tons)	2,944	2,072	42.1%	20,948	11,995	74.6%
Aircraft movements	4,721	4,123	14.5%	29,948	21,416	39.8%

- (1) Note that preliminary passenger traffic figures for January 2020 for Ezeiza Airport, in Argentina, were adjusted to include additional inbound passengers not accounted for in the initial count, for an average of approximately 5% of total passenger traffic at Ezeiza Airport and 1% of total traffic at CAAP, during that period. Importantly, inbound traffic does not affect revenues, as tariffs are applicable on departure passengers.
- (2) Preliminary data on 1,256 flights in January 2020 at Brasilia Airport, due to delays in the submission of information by third parties.
- (3) Cargo volumes in Uruguay were rectified from January to June 2020, to reflect all cargo passing through the cargo terminal, instead of air cargo only.

Operating Statistics by Segment: Traffic, Cargo and Aircraft Movement (2023 vs. 2019)

	Aug'23	Aug'19	% Var.	YTD'23	YTD'19	% Var.
Argentina⁽¹⁾						
Domestic Passengers (thousands)	2,710	2,633	2.9%	19,810	18,873	5.0%
International Passengers (thousands)	968	1,112	-13.0%	7,570	9,269	-18.3%
Transit passengers (thousands)	137	129	5.6%	946	1,009	-6.3%
Total passengers (thousands)	3,815	3,875	-1.6%	28,325	29,151	-2.8%
Cargo volume (tons)	15,973	17,247	-7.4%	122,487	146,445	-16.4%
Aircraft movements	41,025	39,702	3.3%	304,943	301,737	1.1%
Italy						
Domestic Passengers (thousands)	183	157	16.4%	1,166	1,187	-1.8%
International Passengers (thousands)	756	744	1.6%	4,324	4,379	-1.3%
Transit passengers (thousands)	-	0	-	3	3	-25.0%
Total passengers (thousands)	939	902	4.1%	5,493	5,569	-1.4%
Cargo volume (tons)	751	827	-9.2%	8,624	8,494	1.5%
Aircraft movements	8,466	8,379	1.0%	52,487	53,583	-2.0%
Brazil ⁽²⁾						
Domestic Passengers (thousands)	985	913	7.8%	7,274	7,531	-3.4%
International Passengers (thousands)	56	51	8.7%	418	463	-9.7%
Transit passengers (thousands)	446	502	-11.1%	3,700	4,470	-17.2%
Total passengers (thousands)	1,487	1,467	1.4%	11,392	12,464	-8.6%
Cargo volume (tons)	5,878	6,823	-13.9%	42,987	62,505	-31.2%
Aircraft movements	13,630	13,370	1.9%	106,544	106,054	0.5%
Uruguay⁽³⁾						
Domestic Passengers (thousands)	0	0	-	2	0	-
International Passengers (thousands)	153	171	-10.2%	1,237	1,480	-16.4%
Transit passengers (thousands)	4	2	124.5%	14	9	61.7%
Total passengers (thousands)	158	173	-8.7%	1,253	1,490	-15.9%
Cargo volume (tons)	2,519	2,280	10.5%	20,930	18,816	11.2%
Aircraft movements	2,264	2,084	8.6%	20,995	20,071	4.6%
Ecuador						
Domestic Passengers (thousands)	230	205	12.0%	1,760	1,591	10.6%
International Passengers (thousands)	207	203	2.0%	1,465	1,408	4.1%
Transit passengers (thousands)	9	10	-14.4%	51	54	-6.8%
Total passengers (thousands)	445	418	6.5%	3,276	3,053	7.3%
Cargo volume (tons)	2,909	2,933	-0.8%	21,740	27,044	-19.6%
Aircraft movements	6,852	7,423	-7.7%	53,107	55,102	-3.6%
Armenia						
Domestic Passengers (thousands)	-	-	-	-	-	-
International Passengers (thousands)	647	400	62.0%	3,647	2,092	74.3%

Transit passengers (thousands)	-	-	-	-	-	-
Total passengers (thousands)	647	400	62.0%	3,647	2,092	74.3%
Cargo volume (tons)	2,944	1,773	66.0%	20,948	11,606	80.5%
Aircraft movements	4,721	3,221	46.6%	29,948	17,636	69.8%
Peru						
Domestic Passengers (thousands)	-	356	-	-	2,301	-
International Passengers (thousands)	-	2.0	-	-	9	-
Transit passengers (thousands)	-	-	-	-	-	-
Total passengers (thousands)	-	358	-	-	2,311	-
Cargo volume (tons)	-	540	-	-	3,340	-
Aircraft movements	-	2,894	-	-	20,165	-

- (1) Note that preliminary passenger traffic figures for 2019, as well as January 2020 for Ezeiza Airport, in Argentina, were adjusted to include additional inbound passengers not accounted for in the initial count, for an average of approximately 5% of total passenger traffic at Ezeiza Airport and 1% of total traffic at CAAP, during that period. Importantly, inbound traffic does not affect revenues, as tariffs are applicable on departure passengers.
- (2) Preliminary data on 1,256 flights in January 2020 at Brasilia Airport, due to delays in the submission of information by third parties.