



Corporación América Airports S.A. Reports September 2023 Passenger Traffic

Total passenger traffic up 15.7% YoY reaching 99% of pre-pandemic levels
 Armenia, Ecuador, Argentina and Italy above September 2019 levels
 Aircraft movements 1.3% above September 2019

Luxembourg, October 18, 2023— Corporación América Airports S.A. (NYSE: CAAP), (“CAAP” or the “Company”), one of the leading private airport operators in the world, reported today a 15.7% year-on-year (YoY) increase in passenger traffic in September 2023, reaching 98.9% of September 2019 levels.

Passenger Traffic, Cargo Volume and Aircraft Movements Highlights (2023 vs. 2022)

Statistics	Sep'23	Sep'22	% Var.	YTD'23	YTD'22	% Var.
Domestic Passengers (thousands)	3,844	3,226	19.2%	33,856	27,465	23.3%
International Passengers (thousands)	2,612	2,180	19.8%	21,273	15,347	38.6%
Transit Passengers (thousands)	585	680	-14.0%	5,298	4,445	19.2%
Total Passengers (thousands)	7,042	6,085	15.7%	60,426	47,257	27.9%
Cargo Volume (thousand tons)	30.9	29.0	6.7%	268.6	250.6	7.2%
Total Aircraft Movements (thousands)	71.9	65.2	10.3%	639.9	537.8	19.0%

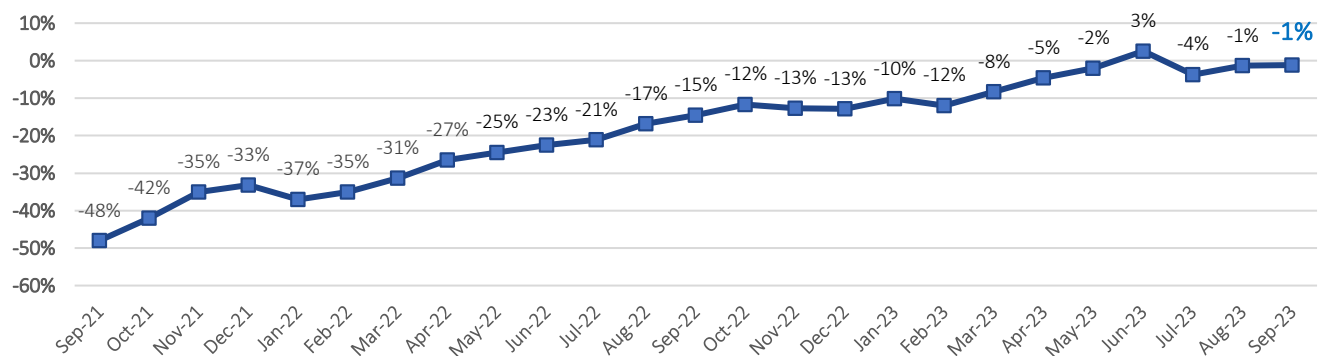
Passenger Traffic, Cargo Volume and Aircraft Movements Highlights (2023 vs. 2019)

Statistics	Sep'23	Sep'19	% Var.	YTD'23	YTD'19 ⁽¹⁾⁽²⁾	% Var.
Domestic Passengers (thousands)	3,844	3,979	-3.4%	33,856	35,463	-4.5%
International Passengers (thousands)	2,612	2,490	4.9%	21,273	21,590	-1.5%
Transit Passengers (thousands)	585	652	-10.3%	5,298	6,198	-14.5%
Total Passengers (thousands)	7,042	7,122	-1.1%	60,426	63,251	-4.5%
Cargo Volume (thousand tons)	30.9	31.9	-3.0%	268.6	310.1	-13.4%
Total Aircraft Movements (thousands)	71.9	71.0	1.3%	639.9	645.3	-0.8%

(1) Note that preliminary passenger traffic figures for 2019, as well as January 2020 for Ezeiza Airport, in Argentina, were adjusted to include additional inbound passengers not accounted for in the initial count, for an average of approximately 5% of total passenger traffic at Ezeiza Airport and 1% of total traffic at CAAP, during that period. Importantly, inbound traffic does not affect revenues, as tariffs are applicable on departure passengers.

(2) Cargo volumes in Uruguay were rectified from January 2019 to June 2020, to reflect all cargo passing through the cargo terminal, instead of air cargo only.

2-Year Passenger Traffic Monthly Performance (vs. 2019)





Passenger Traffic Overview

Total passenger traffic grew 15.7% compared to the same month of 2022, supported by the ongoing recovery in travel demand after the Covid-19 pandemic and the gradual resumption of routes and frequencies across all countries of operations. Overall passenger traffic reached 98.9% of September 2019 levels, substantially in line with the 98.7% posted in August, with international passenger traffic surpassing pre-pandemic levels of September 2019 by 4.9%. Domestic traffic stood at 96.6% of September 2019, in line with 96.3% in August.

In **Argentina**, total passenger traffic continued to recover in September, increasing by 20.4% year-over-year (YoY) and surpassing pre-pandemic volumes by 2.1%. Domestic traffic was 7.5% higher than the levels in September 2019, while international passenger traffic also continued to recover, reaching 90.7% of pre-pandemic levels, up from the 87.0% recorded in August.

In **Italy**, passenger traffic grew by 18.2% compared to the same month in 2022 and surpassed pre-pandemic levels for the third consecutive month, increasing by 1.6% compared to September 2019, down from the 4.1% recorded in August when traffic benefited from the summer season. International passenger traffic, which accounted for 80% of the total traffic, was in line with September 2019 levels, while domestic passenger traffic surpassed pre-pandemic levels by 7.8%. Although some pre-pandemic destinations still need to resume at Pisa airport, Florence airport has already exceeded 2019 levels and was 10.4% above September 2019 traffic volumes.

In **Brazil**, total passenger traffic decreased slightly by 0.1% YoY, reaching 92.9% of September 2019 levels. This decline is down from the 101.4% recorded in August. Domestic traffic, which accounted for almost two-thirds of the total traffic, reached 95.6% of pre-pandemic levels, while transit passengers stood at 87.5% of September 2019 levels, a slight decrease from the 88.9% recorded in August.

In **Uruguay**, total passenger traffic, which is largely international, continued to recover and increased 31.3% YoY, reaching 94.5% of September 2019 levels, up from 91.3% recorded in August.

In **Ecuador**, passenger traffic increased 5.7% YoY and surpassed pre-pandemic volumes by 20.8%. Both domestic and international passenger traffic exceeded pre-pandemic levels by 25.7% and 15.7%, respectively. The comparison with pre-pandemic benefited from the airport's closure during three weekends of September 2019.

In **Armenia**, passenger traffic continued its solid recovery trend, increasing by 34.2% YoY and surpassing the pre-pandemic levels of September 2019 by 62.7%.

Cargo Volume and Aircraft Movements

Cargo volume increased 6.7% YoY and improved to 97.0% of September 2019 levels, or 98.3% when adjusting for the discontinuation of operations in Peru. Cargo volumes in Armenia, Ecuador and Uruguay were above pre-pandemic levels, whereas Italy stood at 79.8%, Argentina at 89.7% and Brazil at 92.9%. Almost 70% of cargo volume originated in Argentina, Ecuador and Uruguay.

Aircraft movements increased 10.3% YoY and surpassed September 2019 levels by 1.3%, or 5.5% when adjusting for the discontinuation of operations in Peru. All the countries of operations, except Brazil, exceeded September 2019 pre-pandemic levels.



Summary Passenger Traffic, Cargo Volume and Aircraft Movements (2023 vs. 2022)

	Sep'23	Sep'22	% Var.	YTD'23	YTD'22	% Var.
Passenger Traffic (thousands)						
Argentina ⁽¹⁾	3,684	3,060	20.4%	32,010	23,949	33.7%
Italy	876	741	18.2%	6,368	5,151	23.6%
Brazil	1,378	1,380	-0.1%	12,770	11,403	12.0%
Uruguay	165	126	31.3%	1,418	1,006	41.0%
Ecuador	398	376	5.7%	3,673	3,116	17.9%
Armenia	540	403	34.2%	4,187	2,632	59.1%
TOTAL	7,042	6,085	15.7%	60,426	47,257	27.9%
Cargo Volume (tons)						
Argentina	16,078	15,056	6.8%	138,565	134,716	2.9%
Italy	856	1,299	-34.1%	9,479	11,091	-14.5%
Brazil	5,443	5,651	-3.7%	48,430	41,231	17.5%
Uruguay ⁽²⁾	2,413	2,248	7.3%	23,343	24,198	-3.5%
Ecuador	2,591	2,532	2.3%	24,331	25,227	-3.6%
Armenia	3,526	2,186	61.3%	24,475	14,181	72.6%
TOTAL	30,907	28,972	6.7%	268,623	250,644	7.2%
Aircraft Movements						
Argentina	38,091	33,419	14.0%	343,034	276,659	24.0%
Italy	7,965	7,300	9.1%	60,452	53,492	13.0%
Brazil	12,860	12,333	4.3%	119,404	105,440	13.2%
Uruguay	2,148	2,014	6.7%	23,143	19,539	18.4%
Ecuador	6,581	6,424	2.4%	59,688	57,545	3.7%
Armenia	4,272	3,705	15.3%	34,220	25,121	36.2%
TOTAL	71,917	65,195	10.3%	639,941	537,796	19.0%

(1) See Footnote 1 in previous table. (2) See Footnote 2 in previous table.



Summary Passenger Traffic, Cargo Volume and Aircraft Movements (2023 vs. 2019)

	Sep'23	Sep'19	% Var.	YTD'23	YTD'19	% Var.
Passenger Traffic (thousands)						
Argentina ⁽¹⁾	3,684	3,608	2.1%	32,010	32,759	-2.3%
Italy	876	862	1.6%	6,368	6,431	-1.0%
Brazil	1,378	1,483	-7.1%	12,770	13,947	-8.4%
Uruguay	165	175	-5.5%	1,418	1,665	-14.8%
Ecuador	398	329	20.8%	3,673	3,382	8.6%
Armenia	540	332	62.7%	4,187	2,424	72.7%
Peru		332	-	-	2,642	-
TOTAL	7,042	7,122	-1.1%	60,426	63,251	-4.5%

(1) See Footnote 1 in previous table. (2) See Footnote 2 in previous table.

Cargo Volume (tons)						
Argentina	16,078	17,932	-10.3%	138,565	164,377	-15.7%
Italy	856	1,072	-20.2%	9,479	9,567	-0.9%
Brazil	5,443	5,857	-7.1%	48,430	68,362	-29.2%
Uruguay ⁽²⁾	2,413	2,167	11.4%	23,343	20,983	11.2%
Ecuador	2,591	2,316	11.9%	24,331	29,360	-17.1%
Armenia	3,526	2,091	68.6%	24,475	13,697	78.7%
Peru	-	431	-	-	3,771	-
TOTAL	30,907	31,866	-3.0%	268,623	310,116	-13.4%

Aircraft Movements						
Argentina	38,091	36,327	4.9%	343,034	338,064	1.5%
Italy	7,965	7,931	0.4%	60,452	61,514	-1.7%
Brazil	12,860	13,235	-2.8%	119,404	119,289	0.1%
Uruguay	2,148	2,054	4.6%	23,143	22,125	4.6%
Ecuador	6,581	5,856	12.4%	59,688	60,958	-2.1%
Armenia	4,272	2,788	53.2%	34,220	20,424	67.5%
Peru	-	2,772	-	-	22,937	-
TOTAL	71,917	70,963	1.3%	639,941	645,311	-0.8%

About Corporación América Airports

Corporación América Airports acquires, develops and operates airport concessions. Currently, the Company operates 53 airports in 6 countries across Latin America and Europe (Argentina, Brazil, Uruguay, Ecuador, Armenia and Italy). In 2022, Corporación América Airports served 65.6 million passengers, 83.7% above the 35.7 million passengers served in 2021 and 22.1% below the 84.2 million served in 2019. The Company is listed on the New York Stock Exchange where it trades under the ticker "CAAP". For more information, visit <http://investors.corporacionamericaairports.com>.

Investor Relations Contact

Patricio Iñaki Esnaola
 Email: patricio.esnaola@caairports.com
 Phone: +5411 4899-6716



Operating Statistics by Airport: Traffic, Cargo and Aircraft Movements (2023 vs. 2022)

	Domestic Passenger Traffic (in thousands)			International Passenger Traffic (in thousands)			Transit Passengers (in thousands)			Total Passenger Traffic (in thousands)			Cargo Volume (in tons) ⁽³⁾			Aircraft Movements		
	Sep-23	Sep-22	% Var.	Sep-23	Sep-22	% Var.	Sep-23	Sep-22	% Var.	Sep-23	Sep-22	% Var.	Sep-23	Sep-22	% Var.	Sep-23	Sep-22	% Var.
Argentina																		
Aeroparque	951	895	6.3%	267	220	21.2%	81	67	20.7%	1,300	1,182	9.9%	79	125	-36.5%	10,418	9,362	11.3%
Bariloche	255	198	28.8%	4	3	15.5%	0	0	-	259	201	28.5%	-	-	-	1,738	1,352	28.6%
Catamarca	7	6	22.8%	-	-	-	1	0	-	8	6	25.3%	5	5	2.2%	302	252	19.8%
C. Rivadavia	45	45	-0.2%	-	0	-	1	0	-	46	45	0.8%	35	39	-9.1%	535	569	-6.0%
Córdoba	209	147	42.6%	41	30	37.3%	4	4	-8.8%	255	181	40.4%	57	235	-75.9%	2,227	1,849	20.4%
El Palomar	-	0	-	-	-	-	-	-	-	-	0	-	-	-	-	348	336	3.6%
Esquel	7	6	19.6%	-	-	-	-	0	-	7	6	19.4%	-	-	-	97	77	26.0%
Ezeiza ⁽¹⁾	272	135	101.7%	612	557	9.9%	25	18	40.6%	909	710	28.0%	15,317	14,386	6.5%	5,924	4,229	40.1%
Formosa	9	8	9.7%	-	0	-	-	-	-	9	8	9.5%	4	2	70.6%	148	176	-15.9%
General Pico	-	0	-	-	-	-	-	0	-	-	0	-	-	-	-	60	53	13.2%
Iguazú	125	109	14.5%	-	0	-	0	0	-	125	110	14.5%	-	-	-	906	802	13.0%
Jujuy	45	43	5.7%	-	0	-	1	1	-	46	43	5.9%	-	5	-	443	434	2.1%
La Rioja	7	7	6.4%	-	-	-	1	0	-	8	7	12.0%	8	61	-86.7%	176	207	-15.0%
Malargüe	0	0	-	-	0	-	0	0	-	0	0	-	-	-	-	80	88	-9.1%
Mar del Plata	22	18	22.0%	-	0	-	1	1	-28.0%	23	19	18.2%	0	6	-	477	551	-13.4%
Mendoza	159	117	35.5%	45	27	66.3%	4	3	10.5%	207	148	40.6%	26	37	-29.2%	1,809	1,442	25.5%
Paraná	5	3	72.9%	-	-	-	-	0	-	5	3	72.5%	-	-	-	355	273	30.0%
Posadas	32	-	-	-	-	-	-	-	-	32	-	-	7	-	-	371	-	-
Pto Madryn	19	14	34.6%	-	-	-	-	0	-	19	14	33.1%	2	2	-16.7%	146	122	19.7%
Reconquista	1	0	-	-	-	-	-	0	-	1	0	-	-	-	-	347	279	24.4%
Resistencia	19	22	-13.7%	-	0	-	1	1	-	20	23	-13.0%	16	11	46.3%	385	306	25.8%
Río Cuarto	3	2	11.6%	-	0	-	-	0	-	3	2	10.9%	-	0	-	64	37	73.0%
Río Gallegos	19	17	11.1%	-	-	-	1	1	-	20	18	11.9%	25	27	-7.4%	381	368	3.5%



	Domestic Passenger Traffic (in thousands)			International Passenger Traffic (in thousands)			Transit Passengers (in thousands)			Total Passenger Traffic (in thousands)			Cargo Volume (in tons) ^(a)			Aircraft Movements		
	Sep-23	Sep -22	% Var.	Sep-23	Sep -22	% Var.	Sep-23	Sep -22	% Var.	Sep-23	Sep -22	% Var.	Sep-23	Sep -22	% Var.	Sep-23	Sep -22	% Var.
Río Grande	12	11	10.2%	-	-	-	0	0	-	12	11	8.6%	404	17	2283.2%	284	228	24.6%
Salta	128	102	25.5%	1	1	-	0	1	-	129	104	24.0%	18	32	-44.7%	1,400	1,012	38.3%
San Fernando	-	3	-	-	1	-	-	-	-	-	4	-	-	-	-	4,519	5,300	-14.7%
San Juan	20	18	6.0%	-	-	-	-	-	-	20	18	6.0%	-	-	-	230	234	-1.7%
San Luis	6	6	-7.9%	-	-	-	-	0	-	6	6	-7.9%	22	18	18.1%	224	336	-33.3%
San Rafael	5	4	13.7%	-	-	-	-	-	-	5	4	13.7%	-	-	-	702	630	11.4%
Santa Rosa	4	-	-	-	-	-	-	-	-	4	-	-	-	-	-	209	-	-
Santiago del Estero	21	18	12.5%	-	-	-	-	-	-	21	18	12.5%	-	11	-	407	264	54.2%
Tucumán	66	63	5.0%	0	0	-	0	1	-	67	64	4.2%	2	-	-	668	543	23.0%
Viedma	2	2	2.7%	-	-	-	1	1	-	3	3	-2.1%	-	-	-	65	103	-36.9%
Villa Mercedes	-	0	-	-	-	-	-	0	-	-	0	-	-	-	-	302	306	-1.3%
Termas de Río Hondo	-	2	-	-	-	-	-	-	-	-	2	-	-	1	-	14	52	-73.1%
Bahía Blanca	23	13	79.8%	-	-	-	1	1	7.5%	24	14	73.5%	15	7	107.8%	324	295	9.8%
Neuquén	92	79	16.1%	-	0	-	1	2	-43.8%	94	82	14.3%	37	30	23.3%	1,006	952	5.7%
Total Argentina	2,590	2,115	22.5%	970	841	15.4%	123	104	18.4%	3,684	3,060	20.4%	16,078	15,056	6.8%	38,091	33,419	14.0%
Italy																		
Pisa	121	130	-6.5%	431	355	21.4%	1	0	-	554	485	14.1%	848	1,282	-33.9%	4,144	3,851	7.6%
Florence	53	26	107.6%	269	230	17.0%	0	-	-	322	256	26.0%	7	16	-54.5%	3,821	3,449	10.8%
Total Italy	174	155	12.2%	700	585	19.6%	1	0	-	876	741	18.2%	856	1,299	-34.1%	7,965	7,300	9.1%
Brazil																		
Natal	161	178	-9.4%	8	5	65.3%	1	1	-	170	183	-7.0%	472	576	-18.0%	1,384	1,428	-3.1%
Brasilia ⁽²⁾	711	587	21.0%	46	42	11.0%	451	568	-20.5%	1,208	1,196	0.9%	4,971	5,075	-2.0%	11,476	10,905	5.2%



	Domestic Passenger Traffic (in thousands)			International Passenger Traffic (in thousands)			Transit Passengers (in thousands)			Total Passenger Traffic (in thousands)			Cargo Volume (in tons) ⁽³⁾			Aircraft Movements		
	Sep-23	Sep -22	% Var.	Sep-23	Sep -22	% Var.	Sep-23	Sep -22	% Var.	Sep-23	Sep -22	% Var.	Sep-23	Sep -22	% Var.	Sep-23	Sep -22	% Var.
Total Brazil	872	765	13.9%	54	47	16.8%	452	568	-20.4%	1,378	1,380	-0.1%	5,443	5,651	-3.7%	12,860	12,333	4.3%
Uruguay																		
Carrasco	0	0	-	156	117	32.9%	2	1	-	158	118	33.7%	2,413	2,248	7.3%	1,618	1,514	6.9%
Punta del Este	0	0	-	7	8	-7.2%	-	-	-	7	8	-6.5%	-	-	-	530	500	6.0%
Total Uruguay	0	0	-	163	125	30.5%	2	1	-	165	126	31.3%	2,413	2,248	7.3%	2,148	2,014	6.7%
Ecuador																		
Guayaquil	164	153	7.5%	184	179	2.4%	6	7	-11.8%	354	339	4.4%	2,161	2,187	-1.2%	6,025	5,986	0.7%
Galápagos	44	37	16.8%	-	-	-	-	-	-	44	37	16.8%	430	345	24.5%	556	438	26.9%
Total Ecuador	208	190	9.3%	184	179	2.4%	6	7	-11.8%	398	376	5.7%	2,591	2,532	2.3%	6,581	6,424	2.4%
Armenia																		
Zvartnots	-	-	-	534	400	33.6%	-	-	-	534	400	33.6%	3,526	2,186	61.3%	4,232	3,675	15.2%
Shirak	-	-	-	6	3	122.6%	-	-	-	6	3	122.6%	-	-	-	40	30	33.3%
Total Armenia	-	-	-	540	403	34.2%	-	-	-	540	403	34.2%	3,526	2,186	61.3%	4,272	3,705	15.3%
Total CAAP	3,844	3,226	19%	2,612	2,180	20%	585	680	-14%	7,042	6,085	16%	30,907	28,972	7%	71,917	65,195	10%

- (1) Note that preliminary passenger traffic figures for January 2020 for Ezeiza Airport, in Argentina, were adjusted to include additional inbound passengers not accounted for in the initial count, for an average of approximately 5% of total passenger traffic at Ezeiza Airport and 1% of total traffic at CAAP, during that period. Importantly, inbound traffic does not affect revenues, as tariffs are applicable on departure passengers.
- (2) Preliminary data on 1,256 flights in January 2020 at Brasilia Airport, due to delays in the submission of information by third parties.
- (3) Cargo volumes in Uruguay were rectified from January to June 2020, to reflect all cargo passing through the cargo terminal, instead of air cargo only.



Operating Statistics by Airport: Traffic, Cargo and Aircraft Movements (2023 vs. 2019)

	Domestic Passenger Traffic (in thousands)			International Passenger Traffic (in thousands)			Transit Passengers (in thousands)			Total Passenger Traffic (in thousands)			Cargo Volume (in tons) ⁽³⁾			Aircraft Movements		
	Sep-23	Sep -19	% Var.	Sep-23	Sep -19	% Var.	Sep-23	Sep -19	% Var.	Sep-23	Sep -19	% Var.	Sep-23	Sep -19	% Var.	Sep-23	Sep -19	% Var.
Argentina																		
Aeroparque	951	912	4%	267	16	1531%	81	70	16%	1,300	999	30%	79	117	-32%	10,418	8,734	19%
Bariloche	255	175	45%	4	2	66%	0	1	-	259	178	45%	-	-	-	1,738	1,296	34%
Catamarca	7	5	48%	-	-	-	1	0	-	8	5	61%	5	6	-18%	302	144	110%
C. Rivadavia	45	49	-9%	-	-	-	1	1	-	46	50	-9%	35	85	-59%	535	768	-30%
Córdoba	209	209	0%	41	54	-24%	4	14	-70%	255	277	-8%	57	217	-74%	2,227	2,437	-9%
El Palomar	-	135	-	-	18	-	-	-	-	-	153	-	-	-	-	348	1,016	-66%
Esquel	7	5	58%	-	-	-	-	0	-	7	5	58%	-	-	-	97	66	47%
Ezeiza ⁽¹⁾	272	88	207%	612	931	-34%	25	25	2%	909	1,044	-13%	15,317	16,936	-10%	5,924	7,075	-16%
Formosa	9	10	-7%	-	-	-	-	-	-	9	10	-7%	4	12	-67%	148	199	-26%
General Pico	-	0	-	-	-	-	-	-	-	-	0	-	-	-	-	60	260	-77%
Iguazú	125	129	-3%	-	1	-	0	2	-	125	132	-5%	-	-	-	906	1,039	-13%
Jujuy	45	34	32%	-	0	-	1	1	-	46	35	31%	-	10	-	443	440	1%
La Rioja	7	5	35%	-	-	-	1	-	-	8	5	47%	8	8	4%	176	145	21%
Malargüe	0	0	-	-	-	-	0	-	-	0	0	-	-	-	-	80	26	208%
Mar del Plata	22	24	-10%	-	0	-	1	1	-9%	23	25	-10%	0	7	-	477	508	-6%
Mendoza	159	147	8%	45	36	25%	4	1	178%	207	185	12%	26	52	-50%	1,809	1,786	1%
Paraná	5	5	-5%	-	0	-	-	0	-	5	5	-6%	-	-	-	355	230	54%
Posadas	32	27	18%	-	0	-	-	-	-	32	27	18%	7	30	-77%	371	353	5%
Pto Madryn	19	7	176%	-	-	-	-	0	-	19	7	172%	2	-	-	146	66	121%
Reconquista	1	0	-	-	0	-	-	0	-	1	0	-	-	-	-	347	284	22%
Resistencia	19	26	-26%	-	0	-	1	3	-	20	29	-31%	16	30	-48%	385	387	-1%
Río Cuarto	3	3	-17%	-	-	-	-	-	-	3	3	-17%	-	1	-	64	58	10%
Río Gallegos	19	19	4%	-	0	-	1	1	-	20	19	5%	25	31	-19%	381	242	57%



	Domestic Passenger Traffic (in thousands)			International Passenger Traffic (in thousands)			Transit Passengers (in thousands)			Total Passenger Traffic (in thousands)			Cargo Volume (in tons) ⁽³⁾			Aircraft Movements		
	Sep-23	Sep -19	% Var.	Sep-23	Sep -19	% Var.	Sep-23	Sep -19	% Var.	Sep-23	Sep -19	% Var.	Sep-23	Sep -19	% Var.	Sep-23	Sep -19	% Var.
Río Grande	12	12	0%	-	-	-	0	0	-	12	12	-1%	404	24	1599%	284	246	15%
Salta	128	123	4%	1	5	-	0	5	-	129	132	-2%	18	92	-81%	1,400	1,192	17%
San Fernando	-	2	-	-	1	-	-	-	-	-	2	-	-	-	-	4,519	3,586	26%
San Juan	20	16	20%	-	-	-	-	-	-	20	16	20%	-	-	-	230	186	24%
San Luis	6	6	-8%	-	-	-	-	-	-	6	6	-8%	22	13	65%	224	97	131%
San Rafael	5	4	13%	-	-	-	-	-	-	5	4	13%	-	0	-	702	289	143%
Santa Rosa	4	4	5%	-	-	-	-	0	-	4	4	5%	-	-	-	209	227	-8%
Santiago del Estero	21	12	69%	-	-	-	-	-	-	21	12	69%	-	10	-	407	246	65%
Tucumán	66	82	-19%	0	4	-	0	1	-	67	87	-23%	2	106	-98%	668	796	-16%
Viedma	2	4	-31%	-	-	-	1	-	-	3	4	-11%	-	-	-	65	57	14%
Villa Mercedes	-	0	-	-	-	-	-	-	-	-	0	-	-	-	-	302	286	6%
Termas de Río Hondo	-	1	-	-	0	-	-	-	-	-	1	-	-	1	-	14	48	-71%
Bahía Blanca	23	25	-9%	-	-	-	1	2	-30%	24	27	-10%	15	24	-35%	324	376	-14%
Neuquén	92	103	-11%	-	2	-	1	2	-11%	94	107	-12%	37	120	-69%	1,006	1,136	-11%
Total Argentina	2,590	2,410	7%	970	1,070	-9%	123	128	-4%	3,684	3,608	2%	16,078	17,932	-10%	38,091	36,327	5%
Italy																		
Pisa	121	127	-4%	431	442	-2%	1	2	-17%	554	570	-3.0%	848	1,060	-20%	4,144	4,337	-4%
Florence	53	35	52%	269	257	5%	0	0	-	322	292	10.4%	7	12	-39%	3,821	3,594	6%
Total Italy	174	162	8%	700	699	0%	1	2	-16%	876	862	1.6%	856	1,072	-20%	7,965	7,931	0%
Brazil																		
Natal	161	165	-3%	8	8	2%	1	-	-	170	173	-2%	472	872	-46%	1,384	1,417	-2%
Brasilia ⁽²⁾	711	746	-5%	46	46	0%	451	517	-13%	1,208	1,309	-8%	4,971	4,985	0%	11,476	11,818	-3%



	Domestic Passenger Traffic (in thousands)			International Passenger Traffic (in thousands)			Transit Passengers (in thousands)			Total Passenger Traffic (in thousands)			Cargo Volume (in tons) ^(a)			Aircraft Movements		
	Sep-23	Sep -19	% Var.	Sep-23	Sep -19	% Var.	Sep-23	Sep -19	% Var.	Sep-23	Sep -19	% Var.	Sep-23	Sep -19	% Var.	Sep-23	Sep -19	% Var.
Total Brazil	872	912	-4%	54	54	1%	452	517	-13%	1,378	1,483	-7%	5,443	5,857	-7%	12,860	13,235	-3%
Uruguay																		
Carrasco	0	0	-	156	168	-7%	2	0	-	158	169	-6%	2,413	2,167	11%	1,618	1,755	-8%
Punta del Este	0	0	-	7	6	16%	-	-	-	7	6	18%	-	-	-	530	299	77%
Total Uruguay	0	0	-	163	175	-6%	2	0	-	165	175	-5%	2,413	2,167	11%	2,148	2,054	5%
Ecuador																		
Guayaquil	164	126	30%	184	159	16%	6	5	21%	354	290	22%	2,161	1,988	9%	6,025	5,416	11%
Galápagos	44	39	11%	-	-	-	-	-	-	44	39	11%	430	328	31%	556	440	26%
Total Ecuador	208	165	26%	184	159	16%	6	5	21%	398	329	21%	2,591	2,316	12%	6,581	5,856	12%
Armenia																		
Zvartnots	-	-	-	534	320	67%	-	-	-	534	320	67%	3,526	2,091	69%	4,232	2,704	57%
Shirak	-	-	-	6	13	-49%	-	-	-	6	13	-49%	-	-	-	40	84	-52%
Total Armenia	-	-	-	540	332	63%	-	-	-	540	332	63%	3,526	2,091	69%	4,272	2,788	53%
Peru																		
Arequipa	-	189	-	-	2	-	-	-	-	-	191	-	-	210	-	-	1,544	-
Juliaca	-	41	-	-	-	-	-	-	-	-	41	-	-	62	-	-	324	-
Puerto Maldonado	-	31	-	-	-	-	-	-	-	-	31	-	-	56	-	-	272	-
Tacna	-	42	-	-	-	-	-	-	-	-	42	-	-	84	-	-	335	-
Ayacucho	-	27	-	-	-	-	-	-	-	-	27	-	-	19	-	-	297	-
Total Peru	-	330	-	-	2	-	-	-	-	-	332	-	-	431	-	-	2,772	-
Total CAAP	3,844	3,979	-3%	2,612	2,490	5%	585	652	-10%	7,042	7,122	-1%	30,907	31,866	-3%	71,917	70,963	1%



- (1) Note that preliminary passenger traffic figures for 2019, as well as January 2020 for Ezeiza Airport, in Argentina, were adjusted to include additional inbound passengers not accounted for in the initial count, for an average of approximately 5% of total passenger traffic at Ezeiza Airport and 1% of total traffic at CAAP, during that period. Importantly, inbound traffic does not affect revenues, as tariffs are applicable on departure passengers.
- (2) Preliminary data on 1,256 flights in January 2020 at Brasilia Airport, due to delays in the submission of information by third parties.



Operating Statistics by Airport: Traffic, Cargo and Aircraft Movements (2023 vs. 2022)

	Domestic Passenger Traffic (in thousands)			International Passenger Traffic (in thousands)			Transit Passengers (in thousands)			Total Passenger Traffic (in thousands)			Cargo Volume (in tons) ⁽³⁾			Aircraft Movements		
	YTD-23	YTD -22	% Var.	YTD-23	YTD -22	% Var.	YTD-23	YTD -22	% Var.	YTD-23	YTD -22	% Var.	YTD-23	YTD -22	% Var.	YTD-23	YTD -22	% Var.
Argentina																		
Aeroparque	8,465	6,981	21.3%	2,310	1,619	42.6%	745	552	35.0%	11,520	9,152	25.9%	1,011	1,170	-13.5%	94,345	74,525	26.6%
Bariloche	1,902	1,527	24.6%	50	20	152.0%	3	4	-28.3%	1,955	1,551	26.1%	-	-	-	14,267	11,624	22.7%
Catamarca	57	46	25.5%	-	0	-	5	1	259.6%	62	47	32.2%	40	45	-11.6%	2,139	1,975	8.3%
C. Rivadavia	415	322	28.8%	0	0	-	6	1	325.9%	422	324	30.2%	338	403	-16.1%	5,280	4,389	20.3%
Córdoba	1,775	1,279	38.7%	375	224	67.3%	23	29	-19.4%	2,173	1,532	41.8%	917	1,090	-15.8%	20,514	15,658	31.0%
El Palomar	0	2	-	-	0	-	-	-	-	0	2	-	-	-	-	3,105	2,569	20.9%
Esquel	63	58	8.7%	0	0	-	0	0	-	63	58	8.3%	-	-	-	875	870	0.6%
Ezeiza ⁽¹⁾	2,221	1,237	79.6%	5,417	3,879	39.6%	198	134	47.7%	7,836	5,250	49.3%	132,029	129,764	1.7%	52,744	36,084	46.2%
Formosa	77	64	18.9%	0	0	-	-	-	-	77	64	18.8%	29	26	12.4%	1,257	1,233	1.9%
General Pico	-	0	-	-	-	-	-	0	-	-	0	-	-	-	-	628	501	25.3%
Iguazú	1,142	843	35.5%	0	0	-	1	3	-56.1%	1,144	846	35.1%	-	-	-	8,583	6,577	30.5%
Jujuy	433	342	26.5%	0	0	-	6	3	137.5%	439	345	27.3%	29	49	-40.8%	3,992	3,360	18.8%
La Rioja	61	47	28.7%	-	0	-	6	1	-	67	48	38.4%	40	121	-67.2%	1,737	1,483	17.1%
Malargüe	0	1	-	-	0	-	0	1	-	1	2	-	-	-	-	825	884	-6.7%
Mar del Plata	223	201	11.3%	0	0	-	9	7	25.0%	233	208	11.8%	1	53	-	5,559	4,595	21.0%
Mendoza	1,367	987	38.5%	373	192	94.2%	20	22	-12.9%	1,760	1,202	46.5%	339	319	6.4%	16,006	11,685	37.0%
Paraná	38	24	56.0%	0	0	-	0	0	-	38	24	57.0%	-	-	-	2,961	2,301	28.7%
Posadas	308	141	118.9%	0	0	-	0	0	-	308	141	118.3%	62	33	89.0%	3,482	1,848	88.4%
Pto Madryn	141	68	105.3%	-	-	-	0	1	-	141	69	103.0%	22	22	-1.8%	1,139	780	46.0%
Reconquista	3	0	-	-	-	-	-	0	-	3	0	-	-	-	-	2,348	2,332	0.7%
Resistencia	136	168	-19.3%	0	0	-	3	5	-25.2%	139	173	-19.6%	80	107	-24.6%	2,244	2,350	-4.5%
Río Cuarto	22	17	25.0%	-	0	-	0	6	-	22	23	-8.4%	5	8	-30.1%	581	686	-15.3%
Río Gallegos	175	149	17.5%	0	-	-	7	5	47.3%	182	154	18.5%	201	176	14.4%	3,600	2,858	26.0%



	Domestic Passenger Traffic (in thousands)			International Passenger Traffic (in thousands)			Transit Passengers (in thousands)			Total Passenger Traffic (in thousands)			Cargo Volume (in tons) ⁽³⁾			Aircraft Movements		
	YTD-23	YTD -22	% Var.	YTD-23	YTD -22	% Var.	YTD-23	YTD -22	% Var.	YTD-23	YTD -22	% Var.	YTD-23	YTD -22	% Var.	YTD-23	YTD -22	% Var.
Río Grande	112	91	23.2%	0	-	-	1	1	-14.2%	113	92	22.7%	2,212	149	1384.0%	1,993	2,052	-2.9%
Salta	1,099	873	25.9%	7	4	64.1%	3	9	-66.6%	1,109	886	25.1%	164	229	-28.3%	11,941	8,625	38.4%
San Fernando	4	19	-77.3%	7	15	-54.9%	-	-	-	11	34	-67.6%	-	-	-	45,330	43,268	4.8%
San Juan	161	143	12.7%	0	0	-	0	0	-	161	143	12.5%	-	-	-	2,014	1,981	1.7%
San Luis	52	55	-4.0%	0	-	-	-	0	-	52	55	-4.0%	262	173	51.2%	2,226	2,298	-3.1%
San Rafael	32	41	-21.6%	-	-	-	-	0	-	32	41	-21.6%	-	-	-	4,165	4,385	-5.0%
Santa Rosa	39	26	50.4%	-	-	-	0	4	-	39	29	31.9%	-	-	-	2,403	1,920	25.2%
Santiago del Estero	179	128	39.5%	0	-	-	0	0	-	179	128	39.6%	35	135	-74.1%	3,743	2,238	67.2%
Tucumán	633	509	24.5%	0	0	-	1	2	-	634	511	24.2%	342	350	-2.5%	5,985	4,425	35.3%
Viedma	26	25	6.9%	-	-	-	5	7	-23.3%	32	32	0.2%	-	-	-	838	849	-1.3%
Villa Mercedes	0	1	-	-	-	-	-	1	-	0	2	-	-	-	-	1,726	1,990	-13.3%
Termas de Río Hondo	11	20	-45.6%	0	0	-	0	-	-	11	20	-45.8%	-	3	-	329	766	-57.0%
Bahía Blanca	197	128	54.4%	-	-	-	12	6	117.0%	209	133	57.0%	142	102	39.0%	2,940	2,419	21.5%
Neuquén	831	605	37.5%	0	0	-	13	19	-35.2%	844	624	35.2%	264	190	39.1%	9,190	8,276	11.0%
Total Argentina	22,400	17,168	30.5%	8,540	5,956	43.4%	1,069	825	29.6%	32,010	23,949	33.7%	138,565	134,716	2.9%	343,034	276,659	24.0%
Italy																		
Pisa	1,019	1,091	-6.6%	3,002	2,391	25.5%	4	2	83.6%	4,025	3,484	15.5%	9,373	10,972	-14.6%	31,191	29,551	5.5%
Florence	322	114	181.9%	2,022	1,552	30.3%	0	0	-	2,344	1,666	40.7%	106	118	-10.5%	29,261	23,941	22.2%
Total Italy	1,340	1,205	11.2%	5,024	3,943	27.4%	4	2	78.1%	6,368	5,151	23.6%	9,479	11,091	-14.5%	60,452	53,492	13.0%
Brazil																		
Natal	1,605	1,593	0.7%	64	41	57.4%	12	36	-65.3%	1,681	1,670	0.7%	5,364	4,106	30.6%	13,298	13,411	-0.8%
Brasilia ⁽²⁾	6,541	5,931	10.3%	408	282	44.8%	4,139	3,521	17.6%	11,089	9,734	13.9%	43,067	37,124	16.0%	106,106	92,029	15.3%



	Domestic Passenger Traffic (in thousands)			International Passenger Traffic (in thousands)			Transit Passengers (in thousands)			Total Passenger Traffic (in thousands)			Cargo Volume (in tons) ⁽³⁾			Aircraft Movements		
	YTD-23	YTD -22	% Var.	YTD-23	YTD -22	% Var.	YTD-23	YTD -22	% Var.	YTD-23	YTD -22	% Var.	YTD-23	YTD -22	% Var.	YTD-23	YTD -22	% Var.
Total Brazil	8,146	7,524	8.3%	472	323	46.4%	4,152	3,557	16.7%	12,770	11,403	12.0%	48,430	41,231	17.5%	119,404	105,440	13.2%
Uruguay																		
Carrasco	2	1	40.9%	1,305	912	43.1%	16	6	173.9%	1,322	919	43.9%	23,343	24,198	-3.5%	15,130	12,341	22.6%
Punta del Este	0	0	-	96	86	10.6%	-	-	-	96	87	10.7%	-	-	-	8,013	7,198	11.3%
Total Uruguay	2	1	40.9%	1,400	998	40.2%	16	6	173.9%	1,418	1,006	41.0%	23,343	24,198	-3.5%	23,143	19,539	18.4%
Ecuador																		
Guayaquil	1,519	1,202	26.4%	1,649	1,495	10.3%	57	55	2.4%	3,225	2,752	17.2%	20,051	21,966	-8.7%	54,322	53,289	1.9%
Galápagos	448	365	22.9%	-	-	-	-	-	-	448	365	22.9%	4,280	3,261	31.2%	5,366	4,256	26.1%
Total Ecuador	1,968	1,566	25.6%	1,649	1,495	10.3%	57	55	2.4%	3,673	3,116	17.9%	24,331	25,227	-3.6%	59,688	57,545	3.7%
Armenia																		
Zvartnots	-	-	-	4,121	2,590	59.1%	-	-	-	4,121	2,590	59.1%	24,475	14,181	72.6%	33,827	24,737	36.7%
Shirak	-	-	-	66	43	54.7%	-	-	-	66	43	54.7%	-	-	-	393	384	2.3%
Total Armenia	-	-	-	4,187	2,632	59.1%	-	-	-	4,187	2,632	59.1%	24,475	14,181	72.6%	34,220	25,121	36.2%
Total CAAP	33,856	27,465	23%	21,273	15,347	39%	5,298	4,445	19%	60,426	47,257	28%	268,623	250,644	7%	639,941	537,796	19%

- (1) Note that preliminary passenger traffic figures for January 2020 for Ezeiza Airport, in Argentina, were adjusted to include additional inbound passengers not accounted for in the initial count, for an average of approximately 5% of total passenger traffic at Ezeiza Airport and 1% of total traffic at CAAP, during that period. Importantly, inbound traffic does not affect revenues, as tariffs are applicable on departure passengers.
- (2) Preliminary data on 1,256 flights in January 2020 at Brasilia Airport, due to delays in the submission of information by third parties.
- (3) Cargo volumes in Uruguay were rectified from January to June 2020, to reflect all cargo passing through the cargo terminal, instead of air cargo only.



Operating Statistics by Airport: Traffic, Cargo and Aircraft Movements (2023 vs. 2019)

	Domestic Passenger Traffic (in thousands)			International Passenger Traffic (in thousands)			Transit Passengers (in thousands)			Total Passenger Traffic (in thousands)			Cargo Volume (in tons) ⁽³⁾			Aircraft Movements		
	YTD-23	YTD -19	% Var.	YTD-23	YTD -19	% Var.	YTD-23	YTD -19	% Var.	YTD-23	YTD -19	% Var.	YTD-23	YTD -19	% Var.	YTD-23	YTD -19	% Var.
Argentina																		
Aeroparque	8,465	8,197	3.3%	2,310	591	291%	745	656	14%	11,520	9,444	22%	1,011	1,088	-7%	94,345	85,242	11%
Bariloche	1,902	1,381	38%	50	35	43%	3	6	-50%	1,955	1,422	37%	-	70	-	14,267	11,095	29%
Catamarca	57	48	20%	-	-	-	5	2	119%	62	50	25%	40	61	-35%	2,139	1,645	30%
C. Rivadavia	415	487	-15%	0	0	-	6	4	62%	422	491	-14%	338	790	-57%	5,280	7,422	-29%
Córdoba	1,775	1,998	-11%	375	569	-34%	23	126	-82%	2,173	2,693	-19%	917	1,454	-37%	20,514	24,216	-15%
El Palomar	0	1,098	-	-	180	-	-	-	-	0	1,278	-	-	-	-	3,105	8,969	-65%
Esquel	63	41	55%	0	0	-	0	0	-	63	41	54%	-	-	-	875	890	-2%
Ezeiza ⁽¹⁾	2,221	691	221%	5,417	8,436	-36%	198	195	2%	7,836	9,322	-16%	132,029	155,087	-15%	52,744	63,658	-17%
Formosa	77	81	-6%	0	0	-	-	0	-	77	81	-6%	29	122	-76%	1,257	1,449	-13%
General Pico	-	2	-	-	-	-	-	0	-	-	2	-	-	-	-	628	2,706	-77%
Iguazú	1,142	1,150	-1%	0	1	-	1	5	-77%	1,144	1,157	-1%	-	-	-	8,583	9,531	-10%
Jujuy	433	298	45%	0	0	-	6	2	158%	439	301	46%	29	89	-67%	3,992	3,503	14%
La Rioja	61	49	25%	-	-	-	6	2	192%	67	51	32%	40	88	-55%	1,737	1,266	37%
Malargüe	0	1	-	-	0	-	0	-	-	1	1	-	-	-	-	825	182	353%
Mar del Plata	223	298	-25%	0	0	-	9	15	-38%	233	313	-26%	1	120	-	5,559	6,321	-12%
Mendoza	1,367	1,342	2%	373	388	-4%	20	16	22%	1,760	1,746	1%	339	609	-44%	16,006	17,034	-6%
Paraná	38	45	-16%	0	0	-	0	0	-	38	45	-16%	-	-	-	2,961	1,851	60%
Posadas	308	249	24%	0	0	-	0	1	-	308	250	23%	62	252	-75%	3,482	3,481	0%
Pto Madryn	141	64	119%	-	-	-	0	0	-	141	65	118%	22	-	-	1,139	649	76%
Reconquista	3	4	-26%	-	0	-	-	0	-	3	4	-28%	-	-	-	2,348	2,475	-5%
Resistencia	136	207	-34%	0	0	-	3	24	-86%	139	232	-40%	80	293	-73%	2,244	3,177	-29%
Río Cuarto	22	29	-26%	-	-	-	0	0	-	22	29	-26%	5	31	-83%	581	608	-4%
Río Gallegos	175	192	-9%	0	0	-	7	7	5%	182	199	-8%	201	342	-41%	3,600	2,507	44%



	Domestic Passenger Traffic (in thousands)			International Passenger Traffic (in thousands)			Transit Passengers (in thousands)			Total Passenger Traffic (in thousands)			Cargo Volume (in tons) ⁽³⁾			Aircraft Movements		
	YTD-23	YTD -19	% Var.	YTD-23	YTD -19	% Var.	YTD-23	YTD -19	% Var.	YTD-23	YTD -19	% Var.	YTD-23	YTD -19	% Var.	YTD-23	YTD -19	% Var.
Río Grande	112	112	0%	0	0	-	1	1	-10%	113	113	0%	2,212	202	997%	1,993	1,804	10%
Salta	1,099	993	11%	7	57	-88%	3	35	-91%	1,109	1,085	2%	164	756	-78%	11,941	10,555	13%
San Fernando	4	11	-59%	7	8	-19%	-	-	-	11	19	-42%	-	-	-	45,330	31,719	43%
San Juan	161	106	52%	0	0	-	0	-	-	161	106	52%	-	-	-	2,014	1,236	63%
San Luis	52	58	-9%	0	-	-	-	-	-	52	58	-9%	262	112	133%	2,226	910	145%
San Rafael	32	42	-23%	-	-	-	-	-	-	32	42	-23%	-	385	-	4,165	3,919	6%
Santa Rosa	39	36	6%	-	-	-	0	0	-	39	37	6%	-	7	-	2,403	1,970	22%
Santiago del Estero	179	116	55%	0	-	-	0	0	-	179	116	55%	35	121	-71%	3,743	2,224	68%
Tucumán	633	684	-7%	0	49	-	1	11	-	634	743	-15%	342	1,403	-76%	5,985	7,046	-15%
Viedma	26	30	-12%	-	-	-	5	-	-	32	30	6%	-	-	-	838	529	58%
Villa Mercedes	0	0	-	-	-	-	-	0	-	0	0	-	-	-	-	1,726	1,414	22%
Termas de Río Hondo	11	12	-12%	0	0	-	0	-	-	11	12	-11%	-	7	-	329	519	-37%
Bahía Blanca	197	260	-24%	-	-	-	12	19	-35%	209	278	-25%	142	252	-44%	2,940	3,888	-24%
Neuquén	831	873	-5%	0	24	-	13	10	32%	844	906	-7%	264	638	-59%	9,190	10,454	-12%
Total Argentina	22,400	21,284	5%	8,540	10,338	-17%	1,069	1,137	-6%	32,010	32,759	-2%	138,565	164,377	-16%	343,034	338,064	1%
Italy																		
Pisa	1,019	1,063	-4%	3,002	3,179	-6%	4	5	-22%	4,025	4,247	-5%	9,373	9,401	0%	31,191	33,877	-8%
Florence	322	286	13%	2,022	1,898	6%	0	0	-	2,344	2,185	7%	106	165	-36%	29,261	27,637	6%
Total Italy	1,340	1,349	-1%	5,024	5,078	-1%	4	5	-22%	6,368	6,431	-1%	9,479	9,567	-1%	60,452	61,514	-2%
Brazil																		
Natal	1,605	1,642	-2%	64	63	2%	12	-	-	1,681	1,706	-1%	5,364	9,724	-45%	13,298	13,080	2%
Brasilia ⁽²⁾	6,541	6,800	-4%	408	454	-10%	4,139	4,987	-17%	11,089	12,241	-9.4%	43,067	58,638	-27%	106,106	106,209	0%



	Domestic Passenger Traffic (in thousands)			International Passenger Traffic (in thousands)			Transit Passengers (in thousands)			Total Passenger Traffic (in thousands)			Cargo Volume (in tons) ^(a)			Aircraft Movements		
	YTD-23	YTD -19	% Var.	YTD-23	YTD -19	% Var.	YTD-23	YTD -19	% Var.	YTD-23	YTD -19	% Var.	YTD-23	YTD -19	% Var.	YTD-23	YTD -19	% Var.
Total Brazil	8,146	8,443	-4%	472	517	-9%	4,152	4,987	-17%	12,770	13,947	-8%	48,430	68,362	-29%	119,404	119,289	0%
Uruguay																		
Carrasco	2	0	-	1,305	1,502	-13%	16	9	76%	1,322	1,512	-13%	23,343	20,983	11%	15,130	16,490	-8%
Punta del Este	0	0	-	96	152	-37%	-	-	-	96	153	-37%	-	-	-	8,013	5,635	42%
Total Uruguay	2	0	-	1,400	1,655	-15%	16	9	76%	1,418	1,665	-15%	23,343	20,983	11%	23,143	22,125	5%
Ecuador																		
Guayaquil	1,519	1,348	13%	1,649	1,567	5%	57	59	-4%	3,225	2,974	8%	20,051	25,748	-22%	54,322	56,449	-4%
Galápagos	448	408	10%	-	-	-	-	-	-	448	408	10%	4,280	3,612	18%	5,366	4,509	19%
Total Ecuador	1,968	1,756	12%	1,649	1,567	5%	57	59	-4%	3,673	3,382	9%	24,331	29,360	-17%	59,688	60,958	-2%
Armenia																		
Zvartnots	-	-	-	4,121	2,312	78%	-	-	-	4,121	2,312	78%	24,475	13,697	79%	33,827	19,757	71%
Shirak	-	-	-	66	112	-41%	-	-	-	66	112	-41%	-	-	-	393	667	-41%
Total Armenia	-	-	-	4,187	2,424	73%	-	-	-	4,187	2,424	73%	24,475	13,697	79%	34,220	20,424	68%
Peru																		
Arequipa	-	1,484	-	-	11	-	-	-	-	-	1,495	-	-	1,780	-	-	11,964	-
Juliaca	-	343	-	-	0	-	-	-	-	-	343	-	-	645	-	-	2,960	-
Puerto Maldonado	-	244	-	-	0	-	-	-	-	-	244	-	-	487	-	-	2,275	-
Tacna	-	357	-	-	0	-	-	-	-	-	357	-	-	715	-	-	3,223	-
Ayacucho	-	203	-	-	-	-	-	-	-	-	203	-	-	143	-	-	2,515	-
Total Peru	-	2,631	-	-	11	-	-	-	-	-	2,642	-	-	3,771	-	-	22,937	-
Total CAAP	33,856	35,463	-5%	21,273	21,590	-1%	5,298	6,198	-15%	60,426	63,251	-4%	268,623	310,116	-13%	639,941	645,311	-1%



- (1) Note that preliminary passenger traffic figures for 2019, as well as January 2020 for Ezeiza Airport, in Argentina, were adjusted to include additional inbound passengers not accounted for in the initial count, for an average of approximately 5% of total passenger traffic at Ezeiza Airport and 1% of total traffic at CAAP, during that period. Importantly, inbound traffic does not affect revenues, as tariffs are applicable on departure passengers.
- (2) Preliminary data on 1,256 flights in January 2020 at Brasilia Airport, due to delays in the submission of information by third parties.

Operating Statistics by Segment: Traffic, Cargo and Aircraft Movement (2023 vs. 2022)

	Sep'23	Sep'22	% Var.	YTD'23	YTD'22	% Var.
Argentina⁽¹⁾						
Domestic Passengers (thousands)	2,590	2,115	22.5%	22,400	17,168	30.5%
International Passengers (thousands)	970	841	15.4%	8,540	5,956	43.4%
Transit passengers (thousands)	123	104	18.4%	1,069	825	29.6%
Total passengers (thousands)	3,684	3,060	20.4%	32,010	23,949	33.7%
Cargo volume (tons)	16,078	15,056	6.8%	138,565	134,716	2.9%
Aircraft movements	38,091	33,419	14.0%	343,034	276,659	24.0%
Italy						
Domestic Passengers (thousands)	174	155	12.2%	1,340	1,205	11.2%
International Passengers (thousands)	700	585	19.6%	5,024	3,943	27.4%
Transit passengers (thousands)	1	0	-	4	2	78.1%
Total passengers (thousands)	876	741	18.2%	6,368	5,151	23.6%
Cargo volume (tons)	856	1,299	-34.1%	9,479	11,091	-14.5%
Aircraft movements	7,965	7,300	9.1%	60,452	53,492	13.0%
Brazil ⁽²⁾						
Domestic Passengers (thousands)	872	765	13.9%	8,146	7,524	8.3%
International Passengers (thousands)	54	47	16.8%	472	323	46.4%
Transit passengers (thousands)	452	568	-20.4%	4,152	3,557	16.7%
Total passengers (thousands)	1,378	1,380	-0.1%	12,770	11,403	12.0%
Cargo volume (tons)	5,443	5,651	-3.7%	48,430	41,231	17.5%
Aircraft movements	12,860	12,333	4.3%	119,404	105,440	13.2%
Uruguay⁽³⁾						
Domestic Passengers (thousands)	0	0	-	2	1	40.9%
International Passengers (thousands)	163	125	30.5%	1,400	998	40.2%
Transit passengers (thousands)	2	1	-	16	6	173.9%
Total passengers (thousands)	165	126	31.3%	1,418	1,006	41.0%
Cargo volume (tons)	2,413	2,248	7.3%	23,343	24,198	-3.5%
Aircraft movements	2,148	2,014	6.7%	23,143	19,539	18.4%
Ecuador						
Domestic Passengers (thousands)	208	190	9.3%	1,968	1,566	25.6%
International Passengers (thousands)	184	179	2.4%	1,649	1,495	10.3%
Transit passengers (thousands)	6	7	-11.8%	57	55	2.4%
Total passengers (thousands)	398	376	5.7%	3,673	3,116	17.9%
Cargo volume (tons)	2,591	2,532	2.3%	24,331	25,227	-3.6%
Aircraft movements	6,581	6,424	2.4%	59,688	57,545	3.7%
Armenia						
Domestic Passengers (thousands)	-	-	-	-	-	-
International Passengers (thousands)	540	403	34.2%	4,187	2,632	59.1%
Transit passengers (thousands)	-	-	-	-	-	-
Total passengers (thousands)	540	403	34.2%	4,187	2,632	59.1%
Cargo volume (tons)	3,526	2,186	61.3%	24,475	14,181	72.6%
Aircraft movements	4,272	3,705	15.3%	34,220	25,121	36.2%

- (1) Note that preliminary passenger traffic figures for January 2020 for Ezeiza Airport, in Argentina, were adjusted to include additional inbound passengers not accounted for in the initial count, for an average of approximately 5% of total passenger traffic at Ezeiza Airport and 1% of total traffic at CAAP, during that period. Importantly, inbound traffic does not affect revenues, as tariffs are applicable on departure passengers.
- (2) Preliminary data on 1,256 flights in January 2020 at Brasilia Airport, due to delays in the submission of information by third parties.
- (3) Cargo volumes in Uruguay were rectified from January to June 2020, to reflect all cargo passing through the cargo terminal, instead of air cargo only.

Operating Statistics by Segment: Traffic, Cargo and Aircraft Movement (2023 vs. 2019)

	Sep'23	Sep'19	% Var.	YTD'23	YTD'19	% Var.
Argentina⁽¹⁾						
Domestic Passengers (thousands)	2,590	2,410	7.5%	22,400	21,284	5.2%
International Passengers (thousands)	970	1,070	-9.3%	8,540	10,338	-17.4%
Transit passengers (thousands)	123	128	-3.6%	1,069	1,137	-6.0%
Total passengers (thousands)	3,684	3,608	2.1%	32,010	32,759	-2.3%
Cargo volume (tons)	16,078	17,932	-10.3%	138,565	164,377	-15.7%
Aircraft movements	38,091	36,327	4.9%	343,034	338,064	1.5%
Italy						
Domestic Passengers (thousands)	174	162	7.8%	1,340	1,349	-0.6%
International Passengers (thousands)	700	699	0.2%	5,024	5,078	-1.1%
Transit passengers (thousands)	1	2	-16.1%	4	5	-22.0%
Total passengers (thousands)	876	862	1.6%	6,368	6,431	-1.0%
Cargo volume (tons)	856	1,072	-20.2%	9,479	9,567	-0.9%
Aircraft movements	7,965	7,931	0.4%	60,452	61,514	-1.7%
Brazil ⁽²⁾						
Domestic Passengers (thousands)	872	912	-4.4%	8,146	8,443	-3.5%
International Passengers (thousands)	54	54	0.6%	472	517	-8.6%
Transit passengers (thousands)	452	517	-12.5%	4,152	4,987	-16.8%
Total passengers (thousands)	1,378	1,483	-7.1%	12,770	13,947	-8.4%
Cargo volume (tons)	5,443	5,857	-7.1%	48,430	68,362	-29.2%
Aircraft movements	12,860	13,235	-2.8%	119,404	119,289	0.1%
Uruguay⁽³⁾						
Domestic Passengers (thousands)	0	0	-	2	0	-
International Passengers (thousands)	163	175	-6.4%	1,400	1,655	-15.4%
Transit passengers (thousands)	2	0	-	16	9	75.9%
Total passengers (thousands)	165	175	-5.5%	1,418	1,665	-14.8%
Cargo volume (tons)	2,413	2,167	11.4%	23,343	20,983	11.2%
Aircraft movements	2,148	2,054	4.6%	23,143	22,125	4.6%
Ecuador						
Domestic Passengers (thousands)	208	165	25.7%	1,968	1,756	12.0%
International Passengers (thousands)	184	159	15.7%	1,649	1,567	5.2%
Transit passengers (thousands)	6	5	21.2%	57	59	-4.4%
Total passengers (thousands)	398	329	20.8%	3,673	3,382	8.6%
Cargo volume (tons)	2,591	2,316	11.9%	24,331	29,360	-17.1%
Aircraft movements	6,581	5,856	12.4%	59,688	60,958	-2.1%
Armenia						
Domestic Passengers (thousands)	-	-	-	-	-	-
International Passengers (thousands)	540	332	62.7%	4,187	2,424	72.7%

Transit passengers (thousands)	-	-	-	-	-	-
Total passengers (thousands)	540	332	62.7%	4,187	2,424	72.7%
Cargo volume (tons)	3,526	2,091	68.6%	24,475	13,697	78.7%
Aircraft movements	4,272	2,788	53.2%	34,220	20,424	67.5%
Peru						
Domestic Passengers (thousands)	-	330	-	-	2,631	-
International Passengers (thousands)	-	2.2	-	-	11	-
Transit passengers (thousands)	-	-	-	-	-	-
Total passengers (thousands)	-	332	-	-	2,642	-
Cargo volume (tons)	-	431	-	-	3,771	-
Aircraft movements	-	2,772	-	-	22,937	-

- (1) Note that preliminary passenger traffic figures for 2019, as well as January 2020 for Ezeiza Airport, in Argentina, were adjusted to include additional inbound passengers not accounted for in the initial count, for an average of approximately 5% of total passenger traffic at Ezeiza Airport and 1% of total traffic at CAAP, during that period. Importantly, inbound traffic does not affect revenues, as tariffs are applicable on departure passengers.
- (2) Preliminary data on 1,256 flights in January 2020 at Brasilia Airport, due to delays in the submission of information by third parties.